

Datasheet for ABIN630352
anti-TRIM59 antibody (Middle Region)



[Go to Product page](#)

2 Images

Overview

Quantity:	100 µg
Target:	TRIM59
Binding Specificity:	Middle Region
Reactivity:	Human, Mouse, Rat, Dog
Host:	Rabbit
Clonality:	Polyclonal
Conjugate:	This TRIM59 antibody is un-conjugated
Application:	Western Blotting (WB), Immunohistochemistry (IHC)

Product Details

Immunogen:	TRIM59 antibody was raised using the middle region of TRIM59 corresponding to a region with amino acids LEKVDDVRQHVQLKQRPLPEVQPVEIYPRVSKILKEEWSRTEIGQIKNV
Specificity:	TRIM59 antibody was raised against the middle region of TRIM59
Purification:	Purified

Target Details

Target:	TRIM59
Alternative Name:	TRIM59 (TRIM59 Products)
Background:	The function of TRIM59 protein is not widely studied, and is yet to be elucidated fully.
Molecular Weight:	44 kDa (MW of target protein)

Target Details

Pathways: [SARS-CoV-2 Protein Interactome](#)

Application Details

Application Notes: WB: 5 µg/mL, IHC: 4-8 µg/mL

Optimal conditions should be determined by the investigator.

Comment: TRIM59 Blocking Peptide, catalog no. 33R-4912, is also available for use as a blocking control in assays to test for specificity of this TRIM59 antibody

Restrictions: For Research Use only

Handling

Format: Lyophilized

Reconstitution: Lyophilized powder. Add distilled water for a 1 mg/mL concentration of TRIM59 antibody in PBS

Concentration: Lot specific

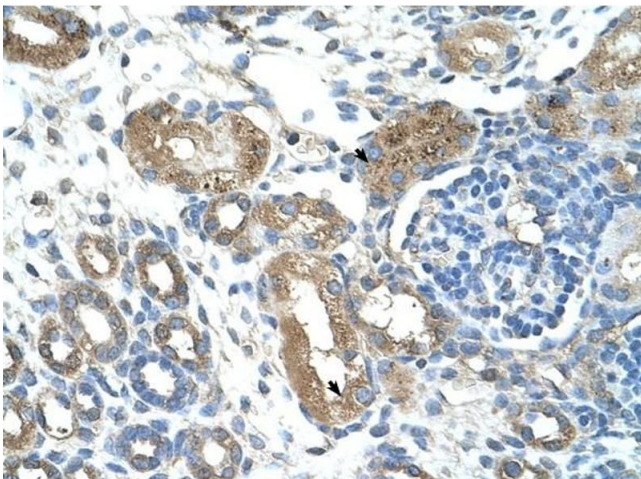
Buffer: PBS

Handling Advice: Avoid repeated freeze/thaw cycles.
Dilute only prior to immediate use.

Storage: 4 °C/-20 °C

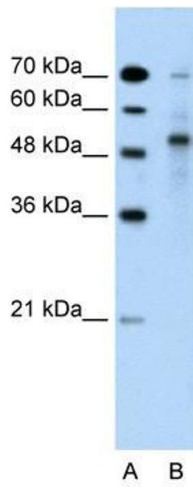
Storage Comment: Store at 2-8 °C for short periods. For longer periods of storage, store at -20 °C.

Images



Immunohistochemistry

Image 1. TRIM59 antibody was used for immunohistochemistry at a concentration of 4-8 ug/ml to stain Epithelial cells of renal tubule (arrows) in Human Kidney. Magnification is at 400X



Western Blotting

Image 2. TRIM59 antibody used at 5 ug/ml to detect target protein.