

Datasheet for ABIN630355 **anti-SLC26A5 antibody**

3 Images



[Go to Product page](#)

Overview

Quantity:	100 µg
Target:	SLC26A5
Reactivity:	Human, Mouse, Rat, Dog
Host:	Rabbit
Clonality:	Polyclonal
Conjugate:	This SLC26A5 antibody is un-conjugated
Application:	Western Blotting (WB), Immunohistochemistry (IHC)

Product Details

Immunogen:	SLC26 A5 antibody was raised using a synthetic peptide corresponding to a region with amino acids FSVTISMAKTLANKHGYQVDGNQELIALGLCNSIGSLFQTFSSICSLRS
Purification:	Purified

Target Details

Target:	SLC26A5
Alternative Name:	SLC26A5 (SLC26A5 Products)
Background:	SLC26A5 is a member of the SLC26A/SuLP transporter family. SLC26A5 is specifically expressed in outer hair cells (OHCs) of the cochlea and is essential in auditory processing. Intracellular anions are thought to act as extrinsic voltage sensors, which bind to this protein and trigger the conformational changes required for rapid length changes in OHCs. Mutations in its gene have been associated with non-syndromic hearing loss.

Target Details

Molecular Weight:	81 kDa (MW of target protein)
Pathways:	Sensory Perception of Sound, Dicarboxylic Acid Transport

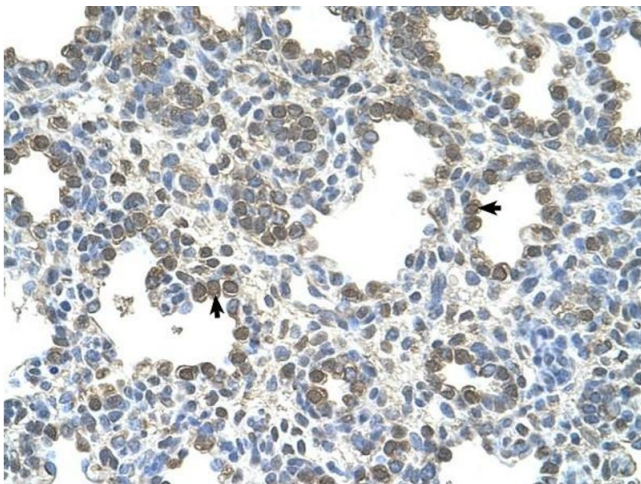
Application Details

Application Notes:	WB: 2.5 µg/mL, IHC: 4-8 µg/mL Optimal conditions should be determined by the investigator.
Comment:	SLC26A5 Blocking Peptide, catalog no. 33R-3083, is also available for use as a blocking control in assays to test for specificity of this SLC26A5 antibody
Restrictions:	For Research Use only

Handling

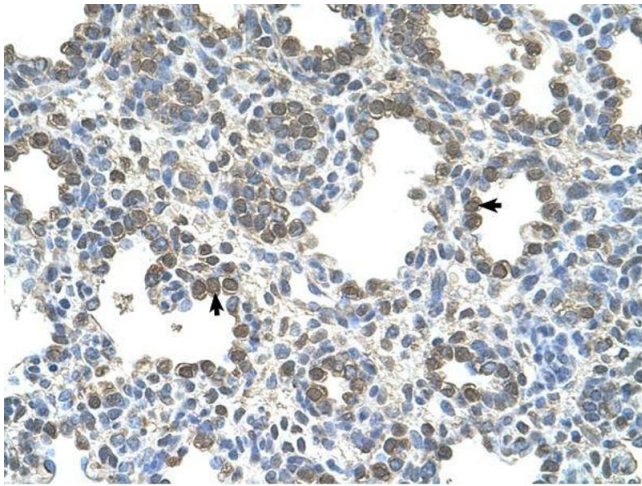
Format:	Lyophilized
Reconstitution:	Lyophilized powder. Add distilled water for a 1 mg/mL concentration of SLC20 5 antibody in PBS
Concentration:	Lot specific
Buffer:	PBS
Handling Advice:	Avoid repeated freeze/thaw cycles.
Storage:	4 °C/-20 °C
Storage Comment:	Store at 2-8 °C for short periods. For longer periods of storage, store at -20 °C.

Images



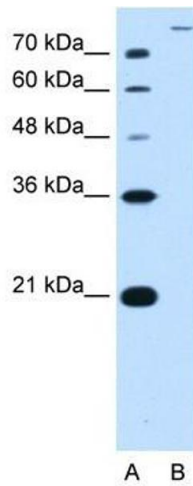
Immunohistochemistry

Image 1. SLC26A5 antibody was used for immunohistochemistry at a concentration of 4-8 µg/ml to stain Alveolar cells (arrows) in Human Lung. Magnification is at 400X



Immunohistochemistry

Image 2. SLC26A5 antibody was used for immunohistochemistry at a concentration of 4-8 ug/ml. Magnification is at 400X



Western Blotting

Image 3. SLC26A5 antibody used at 2.5 ug/ml to detect target protein.