

Datasheet for ABIN630358
anti-PTRH2 antibody (C-Term)



[Go to Product page](#)

1 Image

Overview

Quantity:	100 µg
Target:	PTRH2
Binding Specificity:	C-Term
Reactivity:	Human
Host:	Rabbit
Clonality:	Polyclonal
Conjugate:	This PTRH2 antibody is un-conjugated
Application:	Western Blotting (WB)

Product Details

Immunogen:	PTRH2 antibody was raised using the C terminal of PTRH2 corresponding to a region with amino acids RNPEMLKQWEYCGQPKVVVKAPDEETLIALLAHAKMLGLTVSLIQDAGRT
Specificity:	PTRH2 antibody was raised against the C terminal of PTRH2
Purification:	Purified

Target Details

Target:	PTRH2
Alternative Name:	PTRH2 (PTRH2 Products)
Background:	The natural substrate for this enzyme may be peptidyl-tRNAs which drop off the ribosome during protein synthesis.

Target Details

Molecular Weight: 20 kDa (MW of target protein)

Application Details

Application Notes: WB: 1.25 µg/mL

Optimal conditions should be determined by the investigator.

Comment: PTRH2 Blocking Peptide, catalog no. 33R-8080, is also available for use as a blocking control in assays to test for specificity of this PTRH2 antibody

Restrictions: For Research Use only

Handling

Format: Lyophilized

Reconstitution: Lyophilized powder. Add distilled water for a 1 mg/mL concentration of PTRH2 antibody in PBS

Concentration: Lot specific

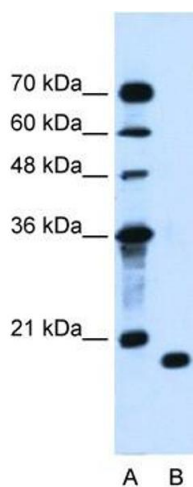
Buffer: PBS

Handling Advice: Avoid repeated freeze/thaw cycles.
Dilute only prior to immediate use.

Storage: 4 °C/-20 °C

Storage Comment: Store at 2-8 °C for short periods. For longer periods of storage, store at -20 °C.

Images



Western Blotting

Image 1. PTRH2 antibody used at 1.25 µg/ml to detect target protein.