

Datasheet for ABIN630362
anti-CLCC1 antibody (N-Term)



[Go to Product page](#)

2 Images

Overview

Quantity:	100 µg
Target:	CLCC1
Binding Specificity:	N-Term
Reactivity:	Human, Rat, Mouse, Dog
Host:	Rabbit
Clonality:	Polyclonal
Conjugate:	This CLCC1 antibody is un-conjugated
Application:	Western Blotting (WB), Immunohistochemistry (IHC)

Product Details

Immunogen:	CLCC1 antibody was raised using the N terminal of CLCC1 corresponding to a region with amino acids MHYDAEIIKRETLLEIQKFLNGEDWKPGALDDALSDILINFKFHFETW
Specificity:	CLCC1 antibody was raised against the N terminal of CLCC1
Purification:	Purified

Target Details

Target:	CLCC1
Alternative Name:	CLCC1 (CLCC1 Products)
Background:	CLCC1 seems to act as a chloride ion channel.
Molecular Weight:	61 kDa (MW of target protein)

Target Details

Pathways: [SARS-CoV-2 Protein Interactome](#), [The Global Phosphorylation Landscape of SARS-CoV-2 Infection](#)

Application Details

Application Notes: WB: 1.25 µg/mL, IHC: 4-8 µg/mL
Optimal conditions should be determined by the investigator.

Comment: CLCC1 Blocking Peptide, catalog no. 33R-6106, is also available for use as a blocking control in assays to test for specificity of this CLCC1 antibody

Restrictions: For Research Use only

Handling

Format: Lyophilized

Reconstitution: Lyophilized powder. Add distilled water for a 1 mg/mL concentration of CLCC1 antibody in PBS

Concentration: Lot specific

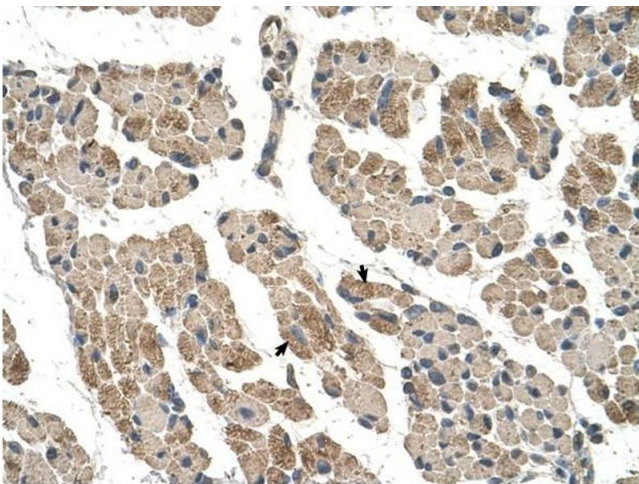
Buffer: PBS

Handling Advice: Avoid repeated freeze/thaw cycles.
Dilute only prior to immediate use.

Storage: 4 °C/-20 °C

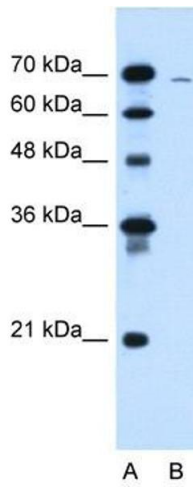
Storage Comment: Store at 2-8 °C for short periods. For longer periods of storage, store at -20 °C.

Images



Immunohistochemistry

Image 1. CLCC1 antibody was used for immunohistochemistry at a concentration of 4-8 ug/ml to stain Skeletal muscle cells (arrows) in Human Muscle. Magnification is at 400X



Western Blotting

Image 2. CLCC1 antibody used at 1.25 ug/ml to detect target protein.