

Datasheet for ABIN630363
anti-LOC342293 antibody (N-Term)



[Go to Product page](#)

2 Images

Overview

Quantity:	100 µg
Target:	LOC342293
Binding Specificity:	N-Term
Reactivity:	Human
Host:	Rabbit
Clonality:	Polyclonal
Conjugate:	This LOC342293 antibody is un-conjugated
Application:	Immunohistochemistry (IHC), Western Blotting (WB)

Product Details

Immunogen:	LOC342293 antibody was raised using the N terminal of LOC342293 corresponding to a region with amino acids PQIGLYVNKCLNSLELESHAARLINTYSEGNKRRLSTAIALMGRSSVIFL
Specificity:	LOC342293 antibody was raised against the N terminal of LOC342293
Purification:	Purified

Target Details

Target:	LOC342293
Alternative Name:	LOC342293 (LOC342293 Products)
Background:	The function of LOC342293 protein is not widely studied, and is yet to be elucidated fully.
Molecular Weight:	29 kDa (MW of target protein)

Application Details

Application Notes:	WB: 1.25 µg/mL, IHC: 4-8 µg/mL Optimal conditions should be determined by the investigator.
Comment:	LOC342293 Blocking Peptide, catalog no. 33R-7301, is also available for use as a blocking control in assays to test for specificity of this LOC342293 antibody
Restrictions:	For Research Use only

Handling

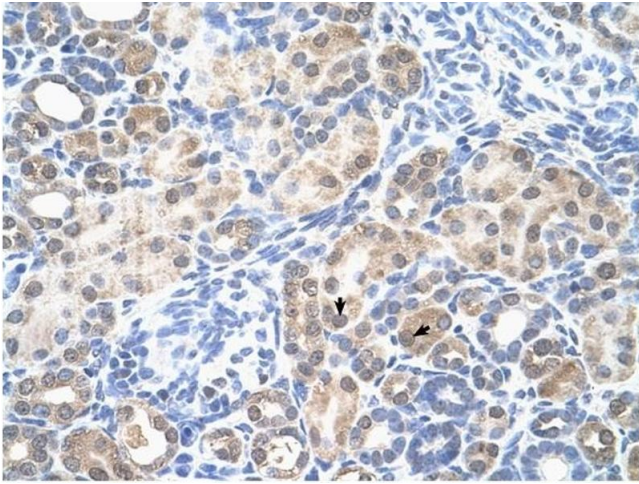
Format:	Lyophilized
Reconstitution:	Lyophilized powder. Add distilled water for a 1 mg/mL concentration of LOC342293 antibody in PBS
Concentration:	Lot specific
Buffer:	PBS
Handling Advice:	Avoid repeated freeze/thaw cycles. Dilute only prior to immediate use.
Storage:	4 °C/-20 °C
Storage Comment:	Store at 2-8 °C for short periods. For longer periods of storage, store at -20 °C.

Images



Western Blotting

Image 1. LOC342293 antibody used at 1.25 µg/ml to detect target protein.



Immunohistochemistry

Image 2. LOC342293 antibody was used for immunohistochemistry at a concentration of 4-8 ug/ml to stain Epithelial cells of renal tubule (arrows) in Human Kidney. Magnification is at 400X