

Datasheet for ABIN630365 **anti-SLC7A8 antibody**



[Go to Product page](#)

1 Image

Overview

Quantity:	100 µg
Target:	SLC7A8
Reactivity:	Human, Mouse, Rat, Zebrafish (Danio rerio), Dog
Host:	Rabbit
Clonality:	Polyclonal
Conjugate:	This SLC7A8 antibody is un-conjugated
Application:	Western Blotting (WB)

Product Details

Immunogen:	SLC7 A8 antibody was raised using a synthetic peptide corresponding to a region with amino acids PRAIFISIPLVTFVYVFANVAYVTAMSPQELLASNAVAVTFGEKLLGVMA
Purification:	Purified

Target Details

Target:	SLC7A8
Alternative Name:	SLC7A8 (SLC7A8 Products)
Background:	SLC7A8 is sodium-independent, high-affinity transport of large neutral amino acids. It has higher affinity for L-phenylalanine than LAT1 but lower affinity for glutamine and serine. L-alanine is transported at physiological concentrations. SLC7A8 also plays a role in basolateral (re)absorption of neutral amino acids.
Molecular Weight:	37 kDa (MW of target protein)

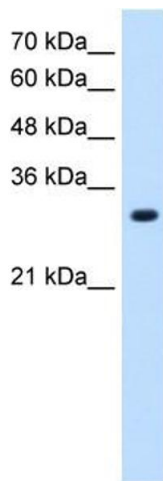
Application Details

Application Notes:	WB: 1.25 µg/mL Optimal conditions should be determined by the investigator.
Comment:	SLC7A8 Blocking Peptide, catalog no. 33R-7317, is also available for use as a blocking control in assays to test for specificity of this SLC7A8 antibody
Restrictions:	For Research Use only

Handling

Format:	Lyophilized
Reconstitution:	Lyophilized powder. Add distilled water for a 1 mg/mL concentration of SLC0 8 antibody in PBS
Concentration:	Lot specific
Buffer:	PBS
Handling Advice:	Avoid repeated freeze/thaw cycles.
Storage:	4 °C/-20 °C
Storage Comment:	Store at 2-8 °C for short periods. For longer periods of storage, store at -20 °C.

Images



Western Blotting

Image 1. SLC7A8 antibody used at 1.25 ug/ml to detect target protein.