

## Datasheet for ABIN630370 **anti-SLC7A14 antibody**

### 2 Images



[Go to Product page](#)

### Overview

Quantity:	100 µg
Target:	SLC7A14
Reactivity:	Human, Mouse, Rat, Zebrafish (Danio rerio), Dog
Host:	Rabbit
Clonality:	Polyclonal
Conjugate:	This SLC7A14 antibody is un-conjugated
Application:	Immunohistochemistry (IHC), Western Blotting (WB)

### Product Details

Immunogen:	SLC7 A14 antibody was raised using a synthetic peptide corresponding to a region with amino acids VAFFIGWNLILEYLIGTAAGASALSSMFDSLANTHTISRWMADSVGTLNGL
Purification:	Purified

### Target Details

Target:	SLC7A14
Alternative Name:	SLC7A14 ( <a href="#">SLC7A14 Products</a> )
Background:	SLC7A14 possesses amino acid transmembrane transporter activity.
Molecular Weight:	85 kDa (MW of target protein)

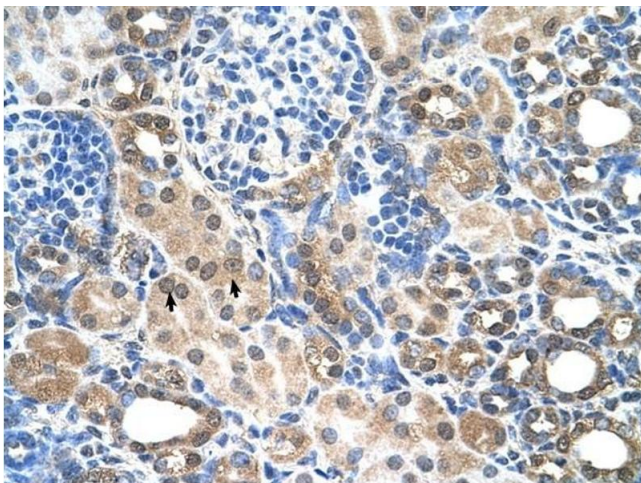
## Application Details

Application Notes:	WB: 2.5 µg/mL, IHC: 4-8 µg/mL Optimal conditions should be determined by the investigator.
Comment:	SLC7A14 Blocking Peptide, catalog no. 33R-9413, is also available for use as a blocking control in assays to test for specificity of this SLC7A14 antibody
Restrictions:	For Research Use only

## Handling

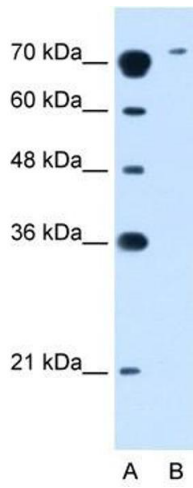
Format:	Lyophilized
Reconstitution:	Lyophilized powder. Add distilled water for a 1 mg/mL concentration of SLC0 14 antibody in PBS
Concentration:	Lot specific
Buffer:	PBS
Handling Advice:	Avoid repeated freeze/thaw cycles.
Storage:	4 °C/-20 °C
Storage Comment:	Store at 2-8 °C for short periods. For longer periods of storage, store at -20 °C.

## Images



### Immunohistochemistry

**Image 1.** SLC7A14 antibody was used for immunohistochemistry at a concentration of 4-8 µg/ml to stain Epithelial cells of renal tubule (arrows) in Human Kidney. Magnification is at 400X



### Western Blotting

**Image 2.** SLC7A14 antibody used at 2.5 ug/ml to detect target protein.