

Datasheet for ABIN630371
anti-SLC35F5 antibody (C-Term)



[Go to Product page](#)

1 Image

Overview

Quantity:	100 µg
Target:	SLC35F5
Binding Specificity:	C-Term
Reactivity:	Human, Mouse, Rat
Host:	Rabbit
Clonality:	Polyclonal
Conjugate:	This SLC35F5 antibody is un-conjugated
Application:	Western Blotting (WB)

Product Details

Immunogen:	SLC35 F5 antibody was raised using the C terminal of SLC35 5 corresponding to a region with amino acids VDREDKLDIPMFFGFVGLFNLLLLWPGFLLHYTGFEDFEFPNKVLMCI
Specificity:	SLC35 F5 antibody was raised against the C terminal of SLC35 5
Purification:	Purified

Target Details

Target:	SLC35F5
Alternative Name:	SLC35F5 (SLC35F5 Products)
Background:	SLC35F5 is a putative solute transporter.
Molecular Weight:	59 kDa (MW of target protein)

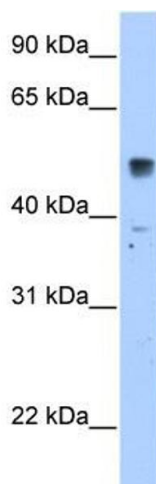
Application Details

Application Notes:	WB: 2.5 µg/mL Optimal conditions should be determined by the investigator.
Comment:	SLC35F5 Blocking Peptide, catalog no. 33R-9476, is also available for use as a blocking control in assays to test for specificity of this SLC35F5 antibody
Restrictions:	For Research Use only

Handling

Format:	Lyophilized
Reconstitution:	Lyophilized powder. Add distilled water for a 1 mg/mL concentration of SLC30 5 antibody in PBS
Concentration:	Lot specific
Buffer:	PBS
Handling Advice:	Avoid repeated freeze/thaw cycles. Dilute only prior to immediate use.
Storage:	4 °C/-20 °C
Storage Comment:	Store at 2-8 °C for short periods. For longer periods of storage, store at -20 °C.

Images



Western Blotting

Image 1. SLC35F5 antibody used at 2.5 µg/ml to detect target protein.