

Datasheet for ABIN630375
anti-SLC6A18 antibody (Middle Region)



[Go to Product page](#)

2 Images

Overview

Quantity:	100 µg
Target:	SLC6A18
Binding Specificity:	Middle Region
Reactivity:	Human, Mouse, Rat
Host:	Rabbit
Clonality:	Polyclonal
Conjugate:	This SLC6A18 antibody is un-conjugated
Application:	Western Blotting (WB), Immunohistochemistry (IHC)

Product Details

Immunogen:	SLC6 A18 antibody was raised using the middle region of SLC6 18 corresponding to a region with amino acids MHLNATWPKRVAQLPLKACLEDFLDKSASGGLAFVVFTETDLHMPGAP
Specificity:	SLC6 A18 antibody was raised against the middle region of SLC6 18
Purification:	Purified

Target Details

Target:	SLC6A18
Alternative Name:	SLC6A18 (SLC6A18 Products)
Background:	The SLC6 family of proteins, which includes SLC6A18, acts as specific transporters for neurotransmitters, amino acids, and osmolytes like betaine, taurine, and creatine. SLC6 proteins are sodium cotransporters that derive the energy for solute transport from the electrochemical

Target Details

gradient for sodium ions.

Molecular Weight: 69 kDa (MW of target protein)

Application Details

Application Notes: WB: 1.25 µg/mL, IHC: 4-8 µg/mL
Optimal conditions should be determined by the investigator.

Comment: SLC6A18 Blocking Peptide, catalog no. 33R-6097, is also available for use as a blocking control in assays to test for specificity of this SLC6A18 antibody

Restrictions: For Research Use only

Handling

Format: Lyophilized

Reconstitution: Lyophilized powder. Add distilled water for a 1 mg/mL concentration of SLC6A18 antibody in PBS

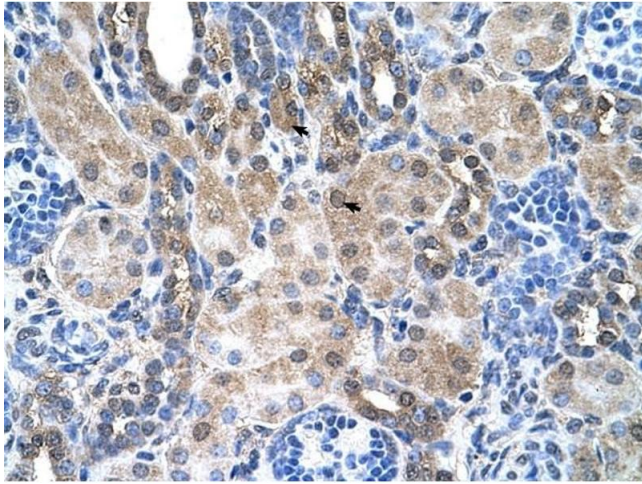
Concentration: Lot specific

Buffer: PBS

Handling Advice: Avoid repeated freeze/thaw cycles.
Dilute only prior to immediate use.

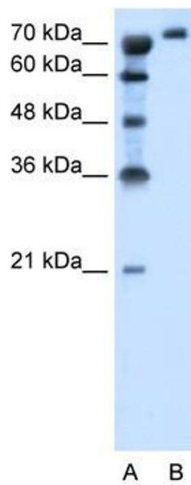
Storage: 4 °C/-20 °C

Storage Comment: Store at 2-8 °C for short periods. For longer periods of storage, store at -20 °C.



Immunohistochemistry

Image 1. SLC6A18 antibody was used for immunohistochemistry at a concentration of 4-8 ug/ml to stain Epithelial cells of renal tubule (arrows) in Human Kidney. Magnification is at 400X



Western Blotting

Image 2. SLC6A18 antibody used at 1.25 ug/ml to detect target protein.