

Datasheet for ABIN630380  
**anti-RCE1/FACE2 antibody**



[Go to Product page](#)

2 Images

## Overview

Quantity:	100 µg
Target:	RCE1/FACE2 (RCE1)
Reactivity:	Human, Mouse, Rat, Dog
Host:	Rabbit
Clonality:	Polyclonal
Conjugate:	This RCE1/FACE2 antibody is un-conjugated
Application:	Immunohistochemistry (IHC), Western Blotting (WB)

## Product Details

Immunogen:	RCE1 antibody was raised using a synthetic peptide corresponding to a region with amino acids WARCLTDMRWLRNQVIAPLTEELVFRACMLPMLAPCMGLGPAVFTCPPLFF
Purification:	Purified

## Target Details

Target:	RCE1/FACE2 (RCE1)
Alternative Name:	RCE1 ( <a href="#">RCE1 Products</a> )
Background:	RCE1 is an integral membrane protein which is classified as a member of the metalloproteinase family. This enzyme is thought to function in the maintenance and processing of CAAX-type prenylated proteins.
Molecular Weight:	36 kDa (MW of target protein)

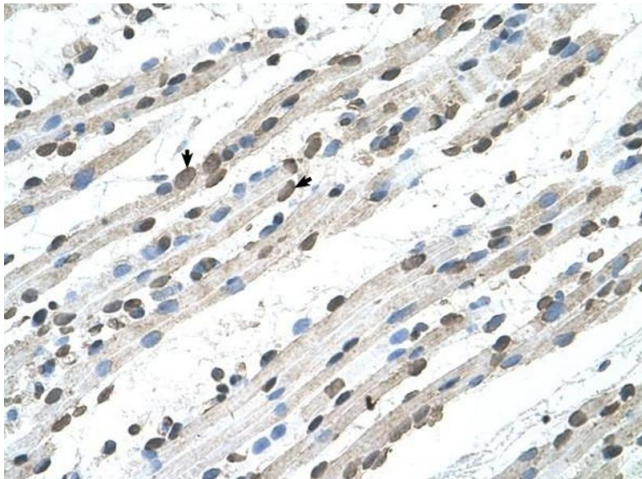
## Application Details

Application Notes:	WB: 1.25 µg/mL, IHC: 4-8 µg/mL Optimal conditions should be determined by the investigator.
Comment:	RCE1 Blocking Peptide, catalog no. 33R-9934, is also available for use as a blocking control in assays to test for specificity of this RCE1 antibody
Restrictions:	For Research Use only

## Handling

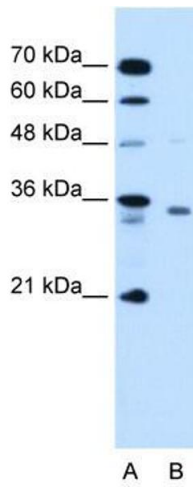
Format:	Lyophilized
Reconstitution:	Lyophilized powder. Add distilled water for a 1 mg/mL concentration of RCE1 antibody in PBS
Concentration:	Lot specific
Buffer:	PBS
Handling Advice:	Avoid repeated freeze/thaw cycles.
Storage:	4 °C/-20 °C
Storage Comment:	Store at 2-8 °C for short periods. For longer periods of storage, store at -20 °C.

## Images



### Immunohistochemistry

**Image 1.** RCE1 antibody was used for immunohistochemistry at a concentration of 4-8 ug/ml to stain Skeletal muscle cells (arrows) in Human Muscle. Magnification is at 400X



### Western Blotting

**Image 2.** RCE1 antibody used at 1.25 ug/ml to detect target protein.