

Datasheet for ABIN630381 **anti-CRELD1 antibody (C-Term)**

3 Images



[Go to Product page](#)

Overview

Quantity:	100 µg
Target:	CRELD1
Binding Specificity:	C-Term
Reactivity:	Human, Dog
Host:	Rabbit
Clonality:	Polyclonal
Conjugate:	This CRELD1 antibody is un-conjugated
Application:	Immunohistochemistry (IHC), Western Blotting (WB)

Product Details

Immunogen:	CRELD1 antibody was raised using the C terminal of CRELD1 corresponding to a region with amino acids TEVCPGENKQCENTEGGYRCICAEGYKQMEGICVKEQIPESAGFFSEMTE
Specificity:	CRELD1 antibody was raised against the C terminal of CRELD1
Purification:	Purified

Target Details

Target:	CRELD1
Alternative Name:	CRELD1 (CRELD1 Products)
Background:	Epidermal growth factor like repeats are a class of cysteine-rich domains that mediate interactions between proteins of diverse function. EGF domains are found in proteins that are either completely secreted or have transmembrane regions that tether the protein to the cell

Target Details

surface. CRELD1 is the founding member of a family of matricellular proteins.

Molecular Weight: 45 kDa (MW of target protein)

Application Details

Application Notes: WB: 5 µg/mL, IHC: 4-8 µg/mL
Optimal conditions should be determined by the investigator.

Comment: CRELD1 Blocking Peptide, catalog no. 33R-9056, is also available for use as a blocking control in assays to test for specificity of this CRELD1 antibody

Restrictions: For Research Use only

Handling

Format: Lyophilized

Reconstitution: Lyophilized powder. Add distilled water for a 1 mg/mL concentration of CRELD1 antibody in PBS

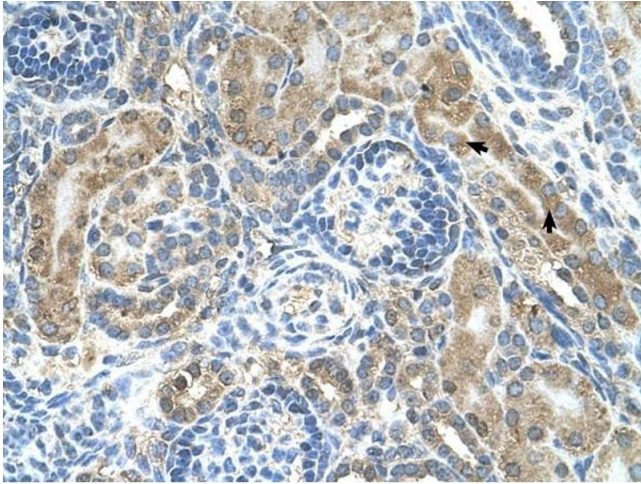
Concentration: Lot specific

Buffer: PBS

Handling Advice: Avoid repeated freeze/thaw cycles.
Dilute only prior to immediate use.

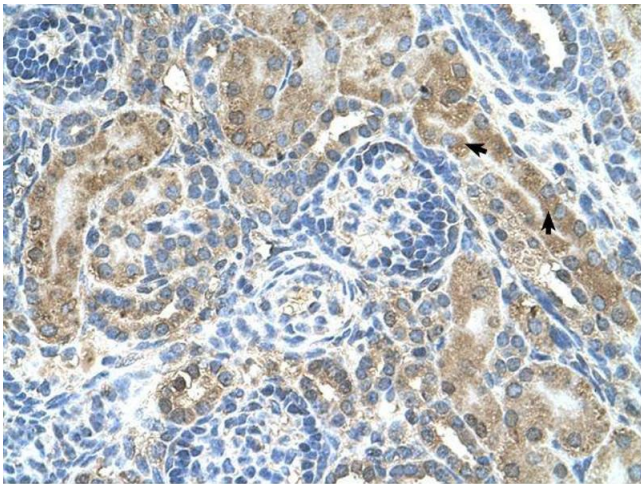
Storage: 4 °C/-20 °C

Storage Comment: Store at 2-8 °C for short periods. For longer periods of storage, store at -20 °C.



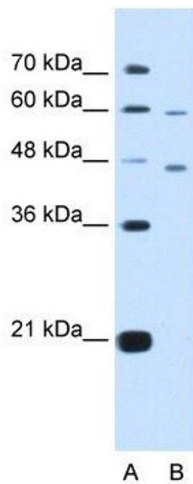
Immunohistochemistry

Image 1. CRELD1 antibody was used for immunohistochemistry at a concentration of 4-8 ug/ml to stain Epithelial cells of renal tubule (arrows) in Human Kidney. Magnification is at 400X



Immunohistochemistry

Image 2. CRELD1 antibody was used for immunohistochemistry at a concentration of 4-8 ug/ml. Magnification is at 400X



Western Blotting

Image 3. CRELD1 antibody used at 5 ug/ml to detect target protein.