

## Datasheet for ABIN630383 **anti-KCNC1 antibody (N-Term)**



[Go to Product page](#)

### 1 Image

#### Overview

Quantity:	100 µg
Target:	KCNC1
Binding Specificity:	N-Term
Reactivity:	Human, Mouse, Rat, Dog
Host:	Rabbit
Clonality:	Polyclonal
Conjugate:	This KCNC1 antibody is un-conjugated
Application:	Western Blotting (WB)

#### Product Details

Immunogen:	KCNC1 antibody was raised using the N terminal of KCNC1 corresponding to a region with amino acids TYRSTLRTLPGTRLAWLAEPDAHSHFDYDPRADFFFDHRPGVFAHILNY
Specificity:	KCNC1 antibody was raised against the N terminal of KCNC1
Purification:	Purified

#### Target Details

Target:	KCNC1
Alternative Name:	KCNC1 ( <a href="#">KCNC1 Products</a> )
Background:	KCNC1 belongs to the delayed rectifier class of channel proteins and is an integral membrane protein that mediates the voltage-dependent potassium ion permeability of excitable membranes.

## Target Details

Molecular Weight: 58 kDa (MW of target protein)

## Application Details

Application Notes: WB: 2.5 µg/mL

Optimal conditions should be determined by the investigator.

Comment: KCNC1 Blocking Peptide, catalog no. 33R-9400, is also available for use as a blocking control in assays to test for specificity of this KCNC1 antibody

Restrictions: For Research Use only

## Handling

Format: Lyophilized

Reconstitution: Lyophilized powder. Add distilled water for a 1 mg/mL concentration of KCNC1 antibody in PBS

Concentration: Lot specific

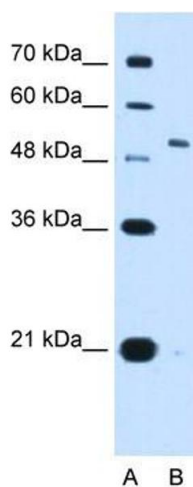
Buffer: PBS

Handling Advice: Avoid repeated freeze/thaw cycles.  
Dilute only prior to immediate use.

Storage: 4 °C/-20 °C

Storage Comment: Store at 2-8 °C for short periods. For longer periods of storage, store at -20 °C.

## Images



### Western Blotting

**Image 1.** KCNC1 antibody used at 2.5 µg/ml to detect target protein.