

Datasheet for ABIN630387
anti-LAPTM4A antibody (Middle Region)



[Go to Product page](#)

1 Image

Overview

Quantity:	100 µg
Target:	LAPTM4A
Binding Specificity:	Middle Region
Reactivity:	Human, Mouse, Rat, Dog
Host:	Rabbit
Clonality:	Polyclonal
Conjugate:	This LAPTM4A antibody is un-conjugated
Application:	Western Blotting (WB)

Product Details

Immunogen:	LAPTM4 A antibody was raised using the middle region of LAPTM4 corresponding to a region with amino acids VLSCLVAISSLTYPRIKEYLDQLPDFYPKDDLLALDSSCLLFIVLVFFA
Specificity:	LAPTM4 A antibody was raised against the middle region of LAPTM4
Purification:	Purified

Target Details

Target:	LAPTM4A
Alternative Name:	LAPTM4A (LAPTM4A Products)
Background:	LAPTM4A is a protein that has four predicted transmembrane domains. The function of its gene has not yet been determined, however, studies in the mouse homolog suggest a role in the transport of small molecules across endosomal and lysosomal membranes.

Target Details

Molecular Weight: 27 kDa (MW of target protein)

Application Details

Application Notes: WB: 5 µg/mL
Optimal conditions should be determined by the investigator.

Comment: LAPTM4A Blocking Peptide, catalog no. 33R-9682, is also available for use as a blocking control in assays to test for specificity of this LAPTM4A antibody

Restrictions: For Research Use only

Handling

Format: Lyophilized

Reconstitution: Lyophilized powder. Add distilled water for a 1 mg/mL concentration of LAPTM0 antibody in PBS

Concentration: Lot specific

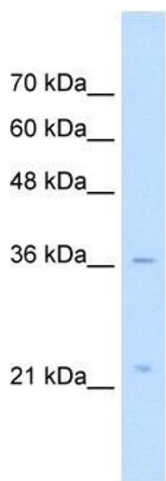
Buffer: PBS

Handling Advice: Avoid repeated freeze/thaw cycles.
Dilute only prior to immediate use.

Storage: 4 °C/-20 °C

Storage Comment: Store at 2-8 °C for short periods. For longer periods of storage, store at -20 °C.

Images



Western Blotting

Image 1. LAPTM4A antibody used at 5 ug/ml to detect target protein.