

Datasheet for ABIN630389

**anti-TMEM126B antibody (Middle Region)**[Go to Product page](#)**1** Image

## Overview

Quantity:	100 µg
Target:	TMEM126B
Binding Specificity:	Middle Region
Reactivity:	Human
Host:	Rabbit
Clonality:	Polyclonal
Conjugate:	This TMEM126B antibody is un-conjugated
Application:	Western Blotting (WB)

## Product Details

Immunogen:	TMEM126 B antibody was raised using the middle region of TMEM126 corresponding to a region with amino acids VFRSSLIGIVCGVFYPSSLAFTKNGRLATKYHTVPLPPKGRVLIHWMTLC
Specificity:	TMEM126 B antibody was raised against the middle region of TMEM126
Purification:	Purified

## Target Details

Target:	TMEM126B
Alternative Name:	TMEM126B ( <a href="#">TMEM126B Products</a> )
Background:	The function of TMEM126B protein is not widely studied, and is yet to be elucidated fully.
Molecular Weight:	23 kDa (MW of target protein)

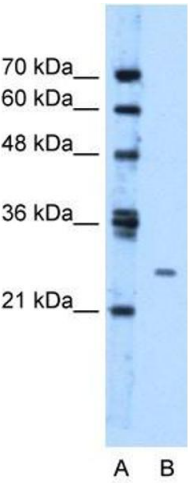
## Application Details

Application Notes:	WB: 1.25 µg/mL Optimal conditions should be determined by the investigator.
Comment:	TMEM126B Blocking Peptide, catalog no. 33R-9538, is also available for use as a blocking control in assays to test for specificity of this TMEM126B antibody
Restrictions:	For Research Use only

## Handling

Format:	Lyophilized
Reconstitution:	Lyophilized powder. Add distilled water for a 1 mg/mL concentration of TMEM120 antibody in PBS
Concentration:	Lot specific
Buffer:	PBS
Handling Advice:	Avoid repeated freeze/thaw cycles. Dilute only prior to immediate use.
Storage:	4 °C/-20 °C
Storage Comment:	Store at 2-8 °C for short periods. For longer periods of storage, store at -20 °C.

## Images



### Western Blotting

**Image 1.** TMEM126B antibody used at 1.25 ug/ml to detect target protein.