

Datasheet for ABIN630391  
**anti-APMAP antibody (C-Term)**



[Go to Product page](#)

1 Image

## Overview

Quantity:	100 µg
Target:	APMAP
Binding Specificity:	C-Term
Reactivity:	Human, Mouse, Rat
Host:	Rabbit
Clonality:	Polyclonal
Conjugate:	This APMAP antibody is un-conjugated
Application:	Western Blotting (WB)

## Product Details

Immunogen:	C20 ORF3 antibody was raised using the C terminal Of C20 rf3 corresponding to a region with amino acids QETVMKFVPRYSLVLELSDSGAFRRSLHDPDGLVATYISEVHEHDGHLYL
Specificity:	C20 ORF3 antibody was raised against the C terminal Of C20 rf3
Purification:	Purified

## Target Details

Target:	APMAP
Alternative Name:	C20ORF3 ( <a href="#">APMAP Products</a> )
Background:	C20orf3 may play a role in adipocyte differentiation.
Molecular Weight:	46 kDa (MW of target protein)

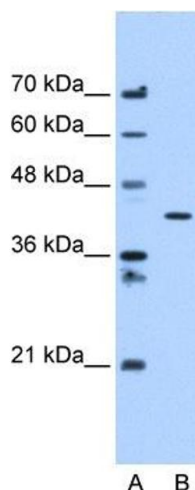
## Application Details

Application Notes:	WB: 1.25 µg/mL Optimal conditions should be determined by the investigator.
Comment:	C20ORF3 Blocking Peptide, catalog no. 33R-7541, is also available for use as a blocking control in assays to test for specificity of this C20ORF3 antibody
Restrictions:	For Research Use only

## Handling

Format:	Lyophilized
Reconstitution:	Lyophilized powder. Add distilled water for a 1 mg/mL concentration of C20 RF3 antibody in PBS
Concentration:	Lot specific
Buffer:	PBS
Handling Advice:	Avoid repeated freeze/thaw cycles. Dilute only prior to immediate use.
Storage:	4 °C/-20 °C
Storage Comment:	Store at 2-8 °C for short periods. For longer periods of storage, store at -20 °C.

## Images



### Western Blotting

**Image 1.** C20ORF3 antibody used at 1.25 ug/ml to detect target protein.