

Datasheet for ABIN630396
anti-MOSPD3 antibody (C-Term)



[Go to Product page](#)

2 Images

Overview

Quantity:	100 µg
Target:	MOSPD3
Binding Specificity:	C-Term
Reactivity:	Human, Mouse
Host:	Rabbit
Clonality:	Polyclonal
Conjugate:	This MOSPD3 antibody is un-conjugated
Application:	Western Blotting (WB), Immunohistochemistry (IHC)

Product Details

Immunogen:	MOSPD3 antibody was raised using the C terminal of MOSPD3 corresponding to a region with amino acids FLLFLLTGIVSVAFLLLPLPDELGSQLPQVLHVSLGQKLVAAYVLGLLTM
Specificity:	MOSPD3 antibody was raised against the C terminal of MOSPD3
Purification:	Purified

Target Details

Target:	MOSPD3
Alternative Name:	MOSPD3 (MOSPD3 Products)
Background:	MOSPD3 is a multi-pass membrane protein with a major sperm protein (MSP) domain. The deletion of a similar mouse gene is associated with defective cardiac development and neonatal lethality.

Target Details

Molecular Weight: 24 kDa (MW of target protein)

Application Details

Application Notes: WB: 5 µg/mL, IHC: 4-8 µg/mL
Optimal conditions should be determined by the investigator.

Comment: MOSPD3 Blocking Peptide, catalog no. 33R-2967, is also available for use as a blocking control in assays to test for specificity of this MOSPD3 antibody

Restrictions: For Research Use only

Handling

Format: Lyophilized

Reconstitution: Lyophilized powder. Add distilled water for a 1 mg/mL concentration of MOSPD3 antibody in PBS

Concentration: Lot specific

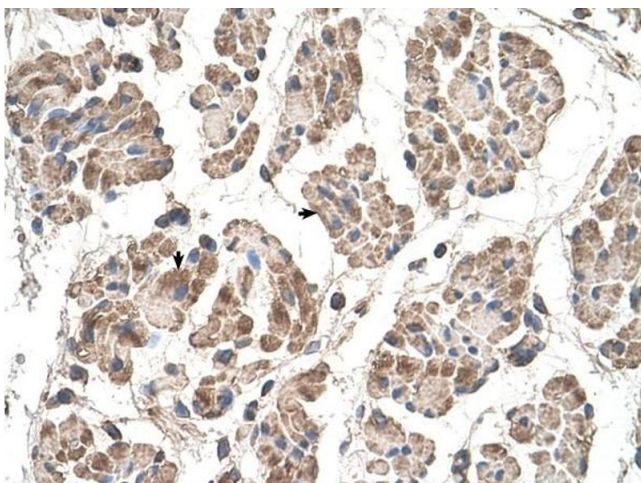
Buffer: PBS

Handling Advice: Avoid repeated freeze/thaw cycles.
Dilute only prior to immediate use.

Storage: 4 °C/-20 °C

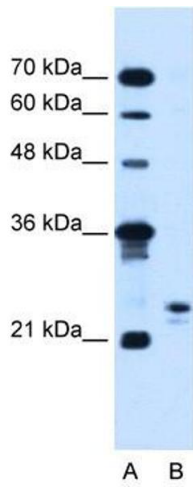
Storage Comment: Store at 2-8 °C for short periods. For longer periods of storage, store at -20 °C.

Images



Immunohistochemistry

Image 1. MOSPD3 antibody was used for immunohistochemistry at a concentration of 4-8 ug/ml to stain Skeletal muscle cells (arrows) in Human Muscle. Magnification is at 400X



Western Blotting

Image 2. MOSPD3 antibody used at 5 ug/ml to detect target protein.