

Datasheet for ABIN630397
anti-SLC22A16 antibody



[Go to Product page](#)

2 Images

Overview

Quantity:	100 µg
Target:	SLC22A16
Reactivity:	Human
Host:	Rabbit
Clonality:	Polyclonal
Conjugate:	This SLC22A16 antibody is un-conjugated
Application:	Immunohistochemistry (IHC), Western Blotting (WB)

Product Details

Immunogen:	SLC22 A16 antibody was raised using a synthetic peptide corresponding to a region with amino acids CSRNKRENTSSSLGYEYTGSKKEFPCVDGYIQNTWKSTAVTQWNLVCDR
Purification:	Purified

Target Details

Target:	SLC22A16
Alternative Name:	SLC22A16 (SLC22A16 Products)
Background:	Organic ion transporters, such as SLC22A16, transport various medically and physiologically important compounds, including pharmaceuticals, toxins, hormones, neurotransmitters, and cellular metabolites. These transporters are also referred to as amphiphilic solute facilitators (ASFs).
Molecular Weight:	63 kDa (MW of target protein)

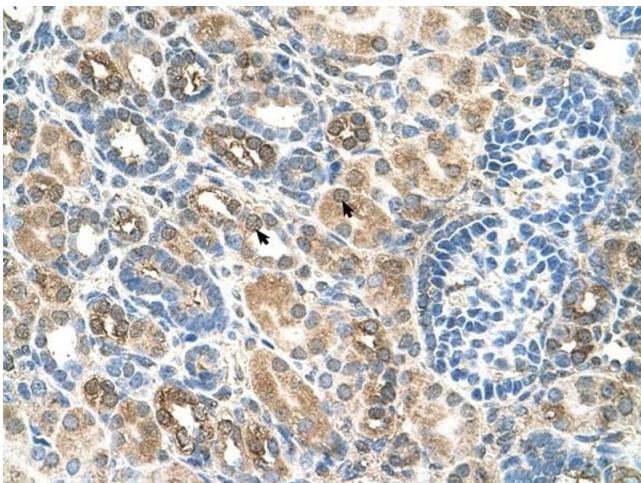
Application Details

Application Notes:	WB: 2.5 µg/mL, IHC: 4-8 µg/mL Optimal conditions should be determined by the investigator.
Comment:	SLC22A16 Blocking Peptide, catalog no. 33R-1816, is also available for use as a blocking control in assays to test for specificity of this SLC22A16 antibody
Restrictions:	For Research Use only

Handling

Format:	Lyophilized
Reconstitution:	Lyophilized powder. Add distilled water for a 1 mg/mL concentration of SLC20 16 antibody in PBS
Concentration:	Lot specific
Buffer:	PBS
Handling Advice:	Avoid repeated freeze/thaw cycles.
Storage:	4 °C/-20 °C
Storage Comment:	Store at 2-8 °C for short periods. For longer periods of storage, store at -20 °C.

Images



Immunohistochemistry

Image 1. SLC22A16 antibody was used for immunohistochemistry at a concentration of 4-8 µg/ml to stain Epithelial cells of renal tubule (arrows) in Human Kidney. Magnification is at 400X



Western Blotting

Image 2. SLC22A16 antibody used at 2.5 ug/ml to detect target protein.