

Datasheet for ABIN630400
anti-FAM55D antibody (C-Term)



[Go to Product page](#)

2 Images

Overview

Quantity:	100 µg
Target:	FAM55D
Binding Specificity:	C-Term
Reactivity:	Human, Dog, Rat
Host:	Rabbit
Clonality:	Polyclonal
Conjugate:	This FAM55D antibody is un-conjugated
Application:	Western Blotting (WB), Immunohistochemistry (IHC)

Product Details

Immunogen:	FAM55 D antibody was raised using the C terminal of FAM55 corresponding to a region with amino acids TYSVKEMEYLTRAIDRTGGKNTVIVISLGQHFRRFPIDVFIRRALNVHK
Specificity:	FAM55 D antibody was raised against the C terminal of FAM55
Purification:	Purified

Target Details

Target:	FAM55D
Alternative Name:	FAM55D (FAM55D Products)
Background:	The function of FAM55 protein is not widely studied, and is yet to be elucidated fully.
Molecular Weight:	60 kDa (MW of target protein)

Application Details

Application Notes:	WB: 5 µg/mL, IHC: 4-8 µg/mL Optimal conditions should be determined by the investigator.
Comment:	FAM55D Blocking Peptide, catalog no. 33R-9404, is also available for use as a blocking control in assays to test for specificity of this FAM55D antibody
Restrictions:	For Research Use only

Handling

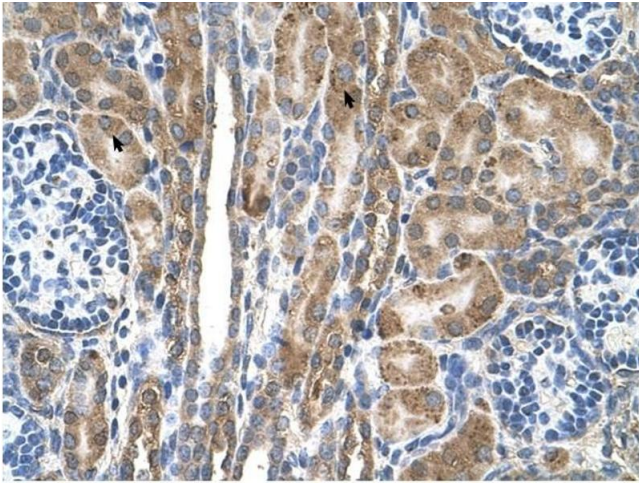
Format:	Lyophilized
Reconstitution:	Lyophilized powder. Add distilled water for a 1 mg/mL concentration of FAM50 antibody in PBS
Concentration:	Lot specific
Buffer:	PBS
Handling Advice:	Avoid repeated freeze/thaw cycles. Dilute only prior to immediate use.
Storage:	4 °C/-20 °C
Storage Comment:	Store at 2-8 °C for short periods. For longer periods of storage, store at -20 °C.

Images



Western Blotting

Image 1. FAM55D antibody used at 5 µg/ml to detect target protein.



Immunohistochemistry

Image 2. FAM55D antibody was used for immunohistochemistry at a concentration of 4-8 ug/ml to stain Epithelial cells of renal tubule (arrows) in Human Kidney. Magnification is at 400X