

## Datasheet for ABIN630401 **anti-UBE2D2 antibody**

### 2 Images



[Go to Product page](#)

### Overview

Quantity:	100 µg
Target:	UBE2D2
Reactivity:	Human, Mouse, Rat, Dog
Host:	Rabbit
Clonality:	Polyclonal
Conjugate:	This UBE2D2 antibody is un-conjugated
Application:	Western Blotting (WB), Immunohistochemistry (IHC)

### Product Details

Immunogen:	UBE2 D2 antibody was raised using a synthetic peptide corresponding to a region with amino acids SQWSPALTISKVLLSICSLLCDPNPDDPLVPEIARIYKTDREKYNRIARE
Purification:	Purified

### Target Details

Target:	UBE2D2
Alternative Name:	UBE2D2 ( <a href="#">UBE2D2 Products</a> )
Background:	The modification of proteins with ubiquitin is an important cellular mechanism for targeting abnormal or short-lived proteins for degradation. Ubiquitination involves at least three classes of enzymes: ubiquitin-activating enzymes, or E1s, ubiquitin-conjugating enzymes, or E2s, and ubiquitin-protein ligases, or E3s. UBE2D2 is a member of the E2 ubiquitin-conjugating enzyme family. This enzyme functions in the ubiquitination of the tumor-suppressor protein p53, which

## Target Details

---

is induced by an E3 ubiquitin-protein ligase. SLC38A4 is found predominantly in liver and transports both cationic and neutral amino acids. The transport of cationic amino acids by SLC38A4 is Na(+) and pH independent, while the transport of neutral amino acids is Na(+) and pH dependent.

Molecular Weight: 60 kDa (MW of target protein)

Pathways: [Activation of Innate immune Response, Toll-Like Receptors Cascades](#)

## Application Details

---

Application Notes: WB: 1.25 µg/mL, IHC: 4-8 µg/mL  
Optimal conditions should be determined by the investigator.

Comment: UBE2D2 Blocking Peptide, catalog no. 33R-8733, is also available for use as a blocking control in assays to test for specificity of this UBE2D2 antibody

Restrictions: For Research Use only

## Handling

---

Format: Lyophilized

Reconstitution: Lyophilized powder. Add distilled water for a 1 mg/mL concentration of UBE0 2 antibody in PBS

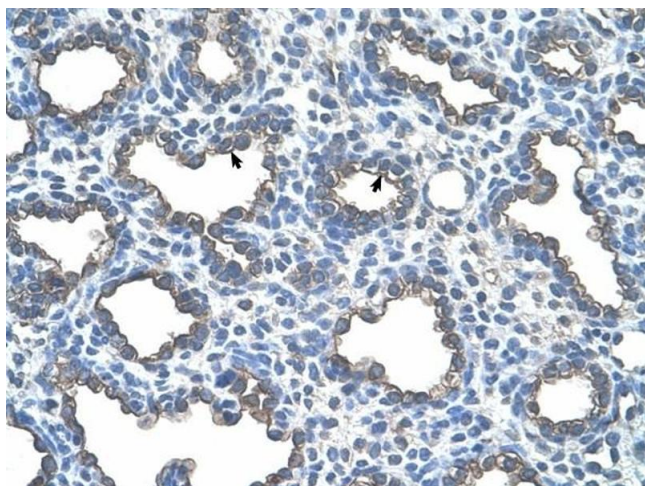
Concentration: Lot specific

Buffer: PBS

Handling Advice: Avoid repeated freeze/thaw cycles.

Storage: 4 °C/-20 °C

Storage Comment: Store at 2-8 °C for short periods. For longer periods of storage, store at -20 °C.



### Immunohistochemistry

**Image 1.** UBE2D2 antibody was used for immunohistochemistry at a concentration of 4-8 ug/ml to stain Alveolar cells (arrows) in Human Lung. Magnification is at 400X



### Western Blotting

**Image 2.** UBE2D2 antibody used at 1.25 ug/ml to detect target protein.