

Datasheet for ABIN630409
anti-SLC6A8 antibody



[Go to Product page](#)

2 Images

Overview

Quantity:	100 µg
Target:	SLC6A8
Reactivity:	Human, Mouse, Rat, Dog
Host:	Rabbit
Clonality:	Polyclonal
Conjugate:	This SLC6A8 antibody is un-conjugated
Application:	Western Blotting (WB), Immunohistochemistry (IHC)

Product Details

Immunogen:	SLC6 A8 antibody was raised using a synthetic peptide corresponding to a region with amino acids CDQLADRRSPVIEFWENKVLRLSGGLEVPGALNWEVTLCLLACWVLYFC
Purification:	Purified

Target Details

Target:	SLC6A8
Alternative Name:	SLC6A8 (SLC6A8 Products)
Background:	SLC6A8 is required for the uptake of creatine in muscles and brain.
Molecular Weight:	70 kDa (MW of target protein)
Pathways:	Retinoic Acid Receptor Signaling Pathway , Intracellular Steroid Hormone Receptor Signaling Pathway , Regulation of Intracellular Steroid Hormone Receptor Signaling , Nuclear Hormone Receptor Binding , ER-Nucleus Signaling , Unfolded Protein Response

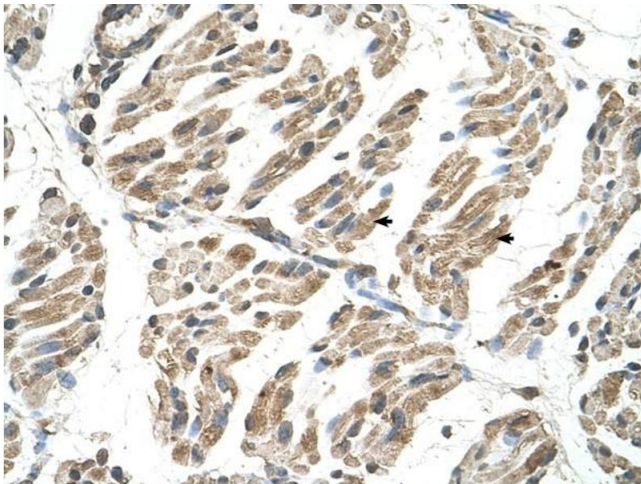
Application Details

Application Notes:	WB: 2.5 µg/mL, IHC: 4-8 µg/mL Optimal conditions should be determined by the investigator.
Comment:	SLC6A8 Blocking Peptide, catalog no. 33R-1670, is also available for use as a blocking control in assays to test for specificity of this SLC6A8 antibody
Restrictions:	For Research Use only

Handling

Format:	Lyophilized
Reconstitution:	Lyophilized powder. Add distilled water for a 1 mg/mL concentration of SLC6A8 antibody in PBS
Concentration:	Lot specific
Buffer:	PBS
Handling Advice:	Avoid repeated freeze/thaw cycles.
Storage:	4 °C/-20 °C
Storage Comment:	Store at 2-8 °C for short periods. For longer periods of storage, store at -20 °C.

Images



Immunohistochemistry

Image 1. SLC6A8 antibody was used for immunohistochemistry at a concentration of 4-8 µg/ml to stain skeletal muscle cells (arrows) in human muscle. Magnification is at 400X



Western Blotting

Image 2. SLC6A8 antibody used at 2.5 ug/ml to detect target protein.