

Datasheet for ABIN630414
anti-GPR161 antibody (C-Term)



[Go to Product page](#)

2 Images

Overview

Quantity:	100 µg
Target:	GPR161
Binding Specificity:	C-Term
Reactivity:	Human
Host:	Rabbit
Clonality:	Polyclonal
Conjugate:	This GPR161 antibody is un-conjugated
Application:	Western Blotting (WB), Immunohistochemistry (IHC)

Product Details

Immunogen:	GPR161 antibody was raised using the C terminal of GPR161 corresponding to a region with amino acids INLFGEEALPGVLVTARTVPGGGFGGRRGSRTLVSQRLQLQSIEEGDVLA
Specificity:	GPR161 antibody was raised against the C terminal of GPR161
Purification:	Purified

Target Details

Target:	GPR161
Alternative Name:	GPR161 (GPR161 Products)
Background:	GPR161 is Orphan receptor.
Molecular Weight:	44 kDa (MW of target protein)

Target Details

Pathways: [cAMP Metabolic Process](#)

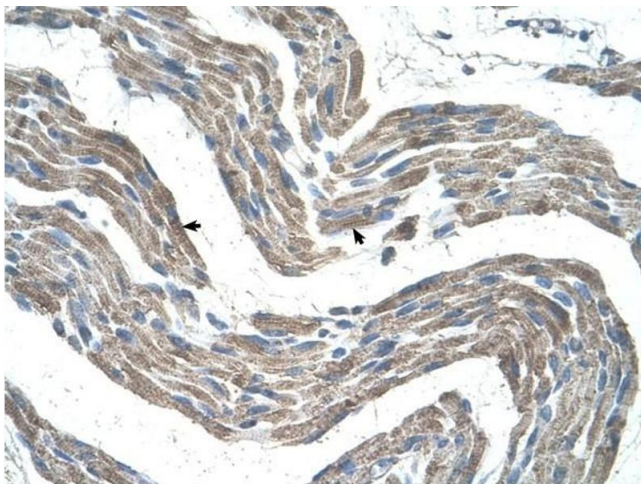
Application Details

Application Notes:	WB: 5 µg/mL, IHC: 4-8 µg/mL Optimal conditions should be determined by the investigator.
Comment:	GPR161 Blocking Peptide, catalog no. 33R-4076, is also available for use as a blocking control in assays to test for specificity of this GPR161 antibody
Restrictions:	For Research Use only

Handling

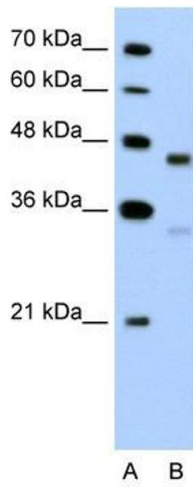
Format:	Lyophilized
Reconstitution:	Lyophilized powder. Add distilled water for a 1 mg/mL concentration of GPR161 antibody in PBS
Concentration:	Lot specific
Buffer:	PBS
Handling Advice:	Avoid repeated freeze/thaw cycles. Dilute only prior to immediate use.
Storage:	4 °C/-20 °C
Storage Comment:	Store at 2-8 °C for short periods. For longer periods of storage, store at -20 °C.

Images



Immunohistochemistry

Image 1. GPR161 antibody was used for immunohistochemistry at a concentration of 4-8 ug/ml to stain Skeletal muscle cells (arrows) in Human Muscle. Magnification is at 400X



Western Blotting

Image 2. GPR161 antibody used at 5 ug/ml to detect target protein.