

Datasheet for ABIN630422
anti-SLC35B1 antibody (C-Term)



[Go to Product page](#)

1 Image

Overview

Quantity:	100 µg
Target:	SLC35B1
Binding Specificity:	C-Term
Reactivity:	Human, Mouse, Rat, Dog
Host:	Rabbit
Clonality:	Polyclonal
Conjugate:	This SLC35B1 antibody is un-conjugated
Application:	Western Blotting (WB)

Product Details

Immunogen:	SLC35 B1 antibody was raised using the C terminal of SLC35 1 corresponding to a region with amino acids ALGQSFIFMTVVYFGPLTCSIITTRKFFITILASVILFANPISPMQWVGT
Specificity:	SLC35 B1 antibody was raised against the C terminal of SLC35 1
Purification:	Purified

Target Details

Target:	SLC35B1
Alternative Name:	SLC35B1 (SLC35B1 Products)
Background:	SLC35B1 belongs to the nucleotide-sugar transporter family and it is probable sugar transporter.

Target Details

Molecular Weight: 35 kDa (MW of target protein)

Application Details

Application Notes: WB: 1.25 µg/mL
Optimal conditions should be determined by the investigator.

Comment: SLC35B1 Blocking Peptide, catalog no. 33R-1334, is also available for use as a blocking control in assays to test for specificity of this SLC35B1 antibody

Restrictions: For Research Use only

Handling

Format: Lyophilized

Reconstitution: Lyophilized powder. Add distilled water for a 1 mg/mL concentration of SLC30 1 antibody in PBS

Concentration: Lot specific

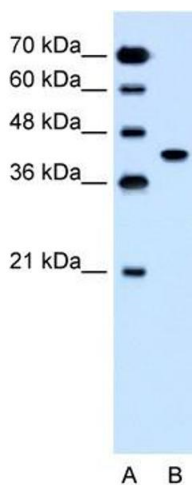
Buffer: PBS

Handling Advice: Avoid repeated freeze/thaw cycles.
Dilute only prior to immediate use.

Storage: 4 °C/-20 °C

Storage Comment: Store at 2-8 °C for short periods. For longer periods of storage, store at -20 °C.

Images



Western Blotting

Image 1. SLC35B1 antibody used at 1.25 µg/ml to detect target protein.