

Datasheet for ABIN630423
anti-SDF4 antibody (C-Term)



[Go to Product page](#)

1 Image

Overview

Quantity:	100 µg
Target:	SDF4
Binding Specificity:	C-Term
Reactivity:	Human, Rat, Mouse
Host:	Rabbit
Clonality:	Polyclonal
Conjugate:	This SDF4 antibody is un-conjugated
Application:	Western Blotting (WB)

Product Details

Immunogen:	SDF4 antibody was raised using the C terminal of SDF4 corresponding to a region with amino acids KQLSVPEFISLPVGTVENQGGQDIDDNWWKDRKKEFEELIDSNHGIVTA
Specificity:	SDF4 antibody was raised against the C terminal of SDF4
Purification:	Purified

Target Details

Target:	SDF4
Alternative Name:	SDF4 (SDF4 Products)
Background:	SDF4 may regulate calcium-dependent activities in the endoplasmic reticulum lumen or post-ER compartment.

Target Details

Molecular Weight: 39 kDa (MW of target protein)

Application Details

Application Notes: WB: 2.5 µg/mL
Optimal conditions should be determined by the investigator.

Comment: SDF4 Blocking Peptide, catalog no. 33R-4609, is also available for use as a blocking control in assays to test for specificity of this SDF4 antibody

Restrictions: For Research Use only

Handling

Format: Lyophilized

Reconstitution: Lyophilized powder. Add distilled water for a 1 mg/mL concentration of SDF4 antibody in PBS

Concentration: Lot specific

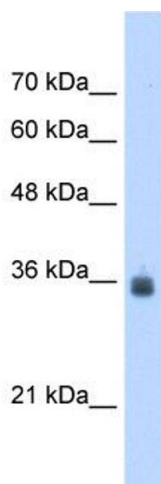
Buffer: PBS

Handling Advice: Avoid repeated freeze/thaw cycles.
Dilute only prior to immediate use.

Storage: 4 °C/-20 °C

Storage Comment: Store at 2-8 °C for short periods. For longer periods of storage, store at -20 °C.

Images



Western Blotting

Image 1. SDF4 antibody used at 2.5 µg/ml to detect target protein.