

Datasheet for ABIN630428
anti-SLC46A3 antibody (N-Term)



[Go to Product page](#)

2 Images

Overview

Quantity:	100 µg
Target:	SLC46A3
Binding Specificity:	N-Term
Reactivity:	Human
Host:	Rabbit
Clonality:	Polyclonal
Conjugate:	This SLC46A3 antibody is un-conjugated
Application:	Immunohistochemistry (IHC), Western Blotting (WB)

Product Details

Immunogen:	SLC46 A3 antibody was raised using the N terminal of SLC46 3 corresponding to a region with amino acids MKILFVEPAIFLSAFAMTLTGPLTTQYVYRRIWEETGNYTFSSDSNISEC
Specificity:	SLC46 A3 antibody was raised against the N terminal of SLC46 3
Purification:	Purified

Target Details

Target:	SLC46A3
Alternative Name:	SLC46A3 (SLC46A3 Products)
Background:	The function of SLC46A3 protein is not widely studied, and is yet to be elucidated fully.
Molecular Weight:	51 kDa (MW of target protein)

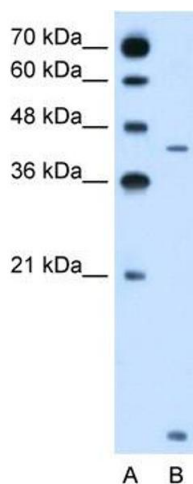
Application Details

Application Notes:	WB: 2.5 µg/mL, IHC: 4-8 µg/mL Optimal conditions should be determined by the investigator.
Comment:	SLC46A3 Blocking Peptide, catalog no. 33R-6144, is also available for use as a blocking control in assays to test for specificity of this SLC46A3 antibody
Restrictions:	For Research Use only

Handling

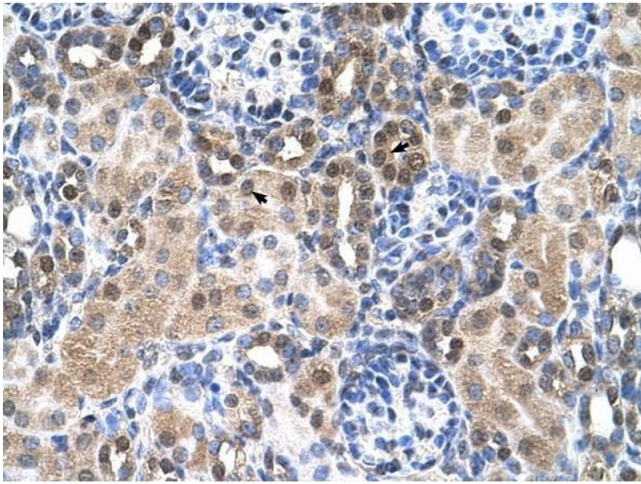
Format:	Lyophilized
Reconstitution:	Lyophilized powder. Add distilled water for a 1 mg/mL concentration of SLC40 3 antibody in PBS
Concentration:	Lot specific
Buffer:	PBS
Handling Advice:	Avoid repeated freeze/thaw cycles. Dilute only prior to immediate use.
Storage:	4 °C/-20 °C
Storage Comment:	Store at 2-8 °C for short periods. For longer periods of storage, store at -20 °C.

Images



Western Blotting

Image 1. SLC46A3 antibody used at 2.5 ug/ml to detect target protein.



Immunohistochemistry

Image 2. SLC46A3 antibody was used for immunohistochemistry at a concentration of 4-8 ug/ml to stain Epithelial cells of renal tubule (arrows) in Human Kidney. Magnification is at 400X