

Datasheet for ABIN630430 **anti-MGAT2 antibody**

2 Images



[Go to Product page](#)

Overview

Quantity:	100 µg
Target:	MGAT2
Reactivity:	Human, Mouse, Rat, Dog
Host:	Rabbit
Clonality:	Polyclonal
Conjugate:	This MGAT2 antibody is un-conjugated
Application:	Immunohistochemistry (IHC), Western Blotting (WB)

Product Details

Immunogen:	MGAT2 antibody was raised using a synthetic peptide corresponding to a region with amino acids PKNAALKLGCINAIEYPSDFGHYREAKFSQTKHHWWWKLHFVWERVKILRD
Purification:	Purified

Target Details

Target:	MGAT2
Alternative Name:	MGAT2 (MGAT2 Products)
Background:	MGAT2 is a Golgi enzyme catalyzing an essential step in the conversion of oligomannose to complex N-glycans. The enzyme has the typical glycosyltransferase domains: a short N-terminal cytoplasmic domain, a hydrophobic non-cleavable signal-anchor domain, and a C-terminal catalytic domain. Mutations in its gene may lead to carbohydrate-deficient glycoprotein syndrome, type II.

Target Details

Molecular Weight: 51 kDa (MW of target protein)

Application Details

Application Notes: WB: 1.25 µg/mL, IHC: 4-8 µg/mL
Optimal conditions should be determined by the investigator.

Comment: MGAT2 Blocking Peptide, catalog no. 33R-7174, is also available for use as a blocking control in assays to test for specificity of this MGAT2 antibody

Restrictions: For Research Use only

Handling

Format: Lyophilized

Reconstitution: Lyophilized powder. Add distilled water for a 1 mg/mL concentration of MGAT2 antibody in PBS

Concentration: Lot specific

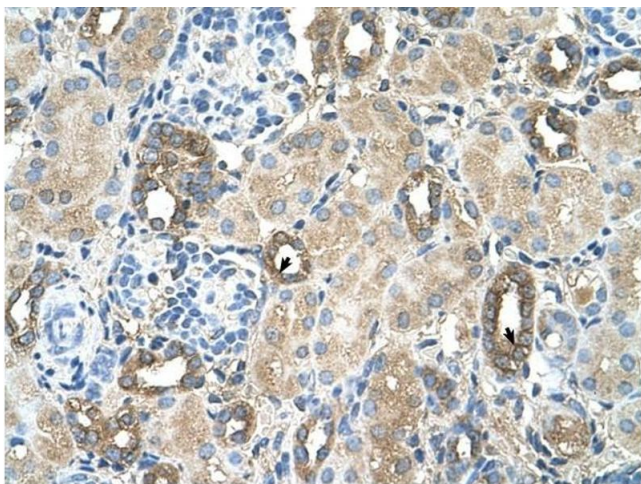
Buffer: PBS

Handling Advice: Avoid repeated freeze/thaw cycles.

Storage: 4 °C/-20 °C

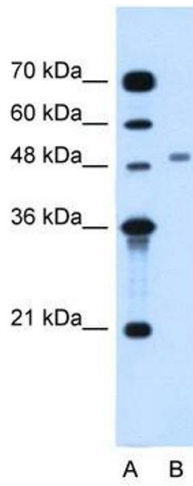
Storage Comment: Store at 2-8 °C for short periods. For longer periods of storage, store at -20 °C.

Images



Immunohistochemistry

Image 1. MGAT2 antibody was used for immunohistochemistry at a concentration of 4-8 µg/ml to stain Epithelial cells of renal tubule (arrows) in Human Kidney. Magnification is at 400X



Western Blotting

Image 2. MGAT2 antibody used at 1.25 ug/ml to detect target protein.