

Datasheet for ABIN630434  
**anti-LRPAP1 antibody (C-Term)**



[Go to Product page](#)

2 Images

## Overview

Quantity:	100 µg
Target:	LRPAP1
Binding Specificity:	C-Term
Reactivity:	Human, Mouse, Rat, Dog
Host:	Rabbit
Clonality:	Polyclonal
Conjugate:	This LRPAP1 antibody is un-conjugated
Application:	Western Blotting (WB), Immunohistochemistry (IHC)

## Product Details

Immunogen:	LRPAP1 antibody was raised using the C terminal of LRPAP1 corresponding to a region with amino acids IDLWDLAQSANLTDKELEAFREELKHFEAKIEKHNHYQKQLEIAHEKLRH
Specificity:	LRPAP1 antibody was raised against the C terminal of LRPAP1
Purification:	Purified

## Target Details

Target:	LRPAP1
Alternative Name:	LRPAP1 ( <a href="#">LRPAP1 Products</a> )
Background:	LRPAP1 interacts with LRP1/alpha-2-macroglobulin receptor and glycoprotein 330.
Molecular Weight:	39 kDa (MW of target protein)

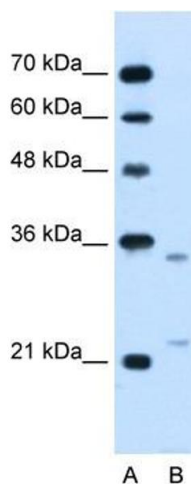
## Application Details

Application Notes:	WB: 2.5 µg/mL, IHC: 4-8 µg/mL Optimal conditions should be determined by the investigator.
Comment:	LRPAP1 Blocking Peptide, catalog no. 33R-3922, is also available for use as a blocking control in assays to test for specificity of this LRPAP1 antibody
Restrictions:	For Research Use only

## Handling

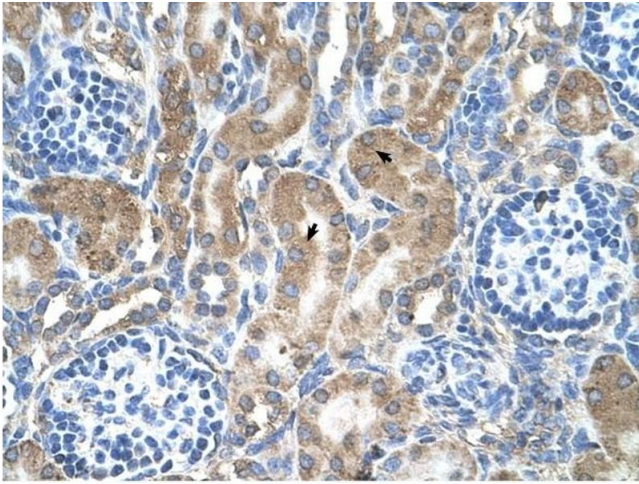
Format:	Lyophilized
Reconstitution:	Lyophilized powder. Add distilled water for a 1 mg/mL concentration of LRPAP1 antibody in PBS
Concentration:	Lot specific
Buffer:	PBS
Handling Advice:	Avoid repeated freeze/thaw cycles. Dilute only prior to immediate use.
Storage:	4 °C/-20 °C
Storage Comment:	Store at 2-8 °C for short periods. For longer periods of storage, store at -20 °C.

## Images



### Western Blotting

**Image 1.** LRPAP1 antibody used at 2.5 ug/ml to detect target protein.



### Immunohistochemistry

**Image 2.** LRPAP1 antibody was used for immunohistochemistry at a concentration of 4-8 ug/ml to stain Epithelial cells of renal tubule (arrows) in Human Kidney. Magnification is at 400X