

Datasheet for ABIN630436 anti-PPIB antibody

2 Images



[Go to Product page](#)

Overview

Quantity:	100 µg
Target:	PPIB
Reactivity:	Human, Mouse, Dog
Host:	Rabbit
Clonality:	Polyclonal
Conjugate:	This PPIB antibody is un-conjugated
Application:	Western Blotting (WB), Immunohistochemistry (IHC)

Product Details

Immunogen:	PPIB antibody was raised using a synthetic peptide corresponding to a region with amino acids FITTVKTAWLDGKHHVFGKVLGMEVVRKVESTKTDSRDKPLKDVIIADC
Purification:	Purified

Target Details

Target:	PPIB
Alternative Name:	PPIB (PPIB Products)
Background:	PPIB is a cyclosporine-binding protein and is mainly located within the endoplasmic reticulum. It is associated with the secretory pathway and released in biological fluids. This protein can bind to cells derived from T- and B-lymphocytes, and may regulate cyclosporine A-mediated immunosuppression.
Molecular Weight:	24 kDa (MW of target protein)

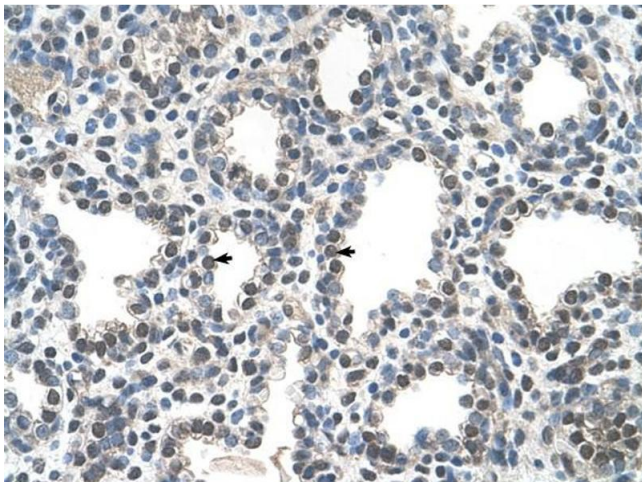
Application Details

Application Notes:	WB: 5 µg/mL, IHC: 4-8 µg/mL Optimal conditions should be determined by the investigator.
Comment:	PPIB Blocking Peptide, catalog no. 33R-2937, is also available for use as a blocking control in assays to test for specificity of this PPIB antibody
Restrictions:	For Research Use only

Handling

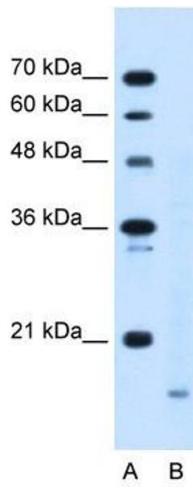
Format:	Lyophilized
Reconstitution:	Lyophilized powder. Add distilled water for a 1 mg/mL concentration of PPIB antibody in PBS
Concentration:	Lot specific
Buffer:	PBS
Handling Advice:	Avoid repeated freeze/thaw cycles.
Storage:	4 °C/-20 °C
Storage Comment:	Store at 2-8 °C for short periods. For longer periods of storage, store at -20 °C.

Images



Immunohistochemistry

Image 1. PPIB antibody was used for immunohistochemistry at a concentration of 4-8 ug/ml to stain Alveolar cells (arrows) in Human Lung. Magnification is at 400X



Western Blotting

Image 2. PPIB antibody used at 5 ug/ml to detect target protein.