

## Datasheet for ABIN630439 **anti-NEU1 antibody**

### 3 Images



[Go to Product page](#)

### Overview

Quantity:	100 µg
Target:	NEU1
Reactivity:	Human, Mouse, Rat
Host:	Rabbit
Clonality:	Polyclonal
Conjugate:	This NEU1 antibody is un-conjugated
Application:	Western Blotting (WB), Immunohistochemistry (IHC)

### Product Details

Immunogen:	NEU1 antibody was raised using a synthetic peptide corresponding to a region with amino acids VWSKDDGVSWSWTPRNLSLDIGTEVFAPGPGSGIQKQREPRKGRLLIVCGHG
Purification:	Purified

### Target Details

Target:	NEU1
Alternative Name:	NEU1 ( <a href="#">NEU1 Products</a> )
Background:	NEU1 is a lysosomal enzyme, which cleaves terminal sialic acid residues from substrates such as glycoproteins and glycolipids. In the lysosome, this enzyme is part of a heterotrimeric complex together with beta-galactosidase and cathepsin A. Mutations in NEU1 gene can lead to sialidosis.
Molecular Weight:	40 kDa (MW of target protein)

## Target Details

Pathways: [SARS-CoV-2 Protein Interactome](#)

## Application Details

Application Notes: WB: 5 µg/mL, IHC: 4-8 µg/mL

Optimal conditions should be determined by the investigator.

Comment: NEU1 Blocking Peptide, catalog no. 33R-9913, is also available for use as a blocking control in assays to test for specificity of this NEU1 antibody

Restrictions: For Research Use only

## Handling

Format: Lyophilized

Reconstitution: Lyophilized powder. Add distilled water for a 1 mg/mL concentration of NEU1 antibody in PBS

Concentration: Lot specific

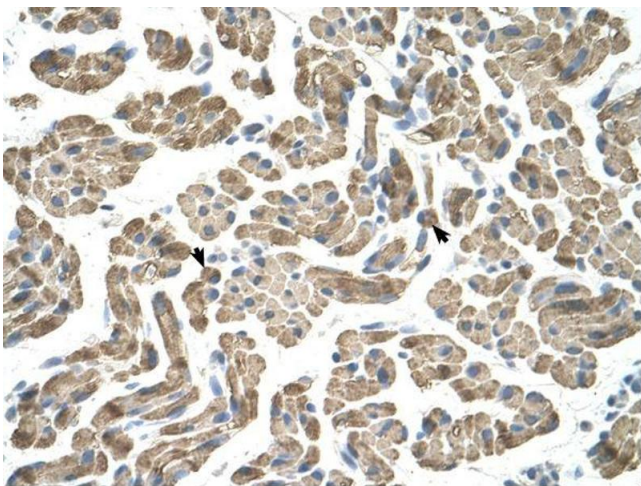
Buffer: PBS

Handling Advice: Avoid repeated freeze/thaw cycles.

Storage: 4 °C/-20 °C

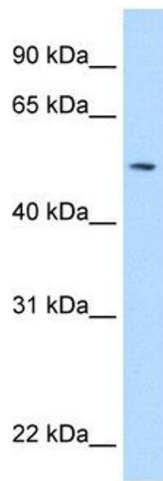
Storage Comment: Store at 2-8 °C for short periods. For longer periods of storage, store at -20 °C.

## Images



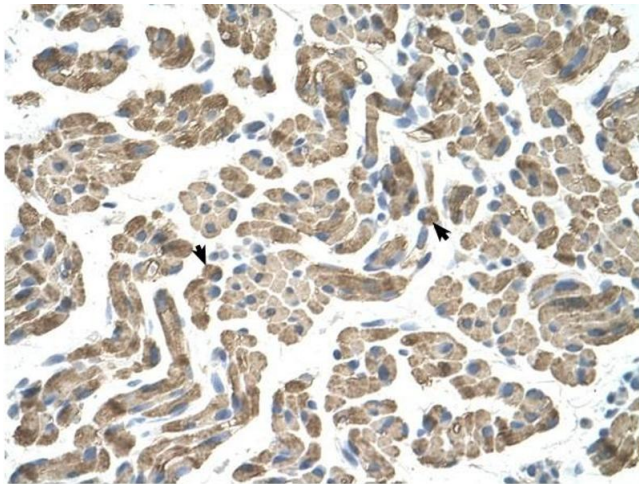
### Immunohistochemistry

**Image 1.** NEU1 antibody was used for immunohistochemistry at a concentration of 4-8 µg/ml. Magnification is at 400X



### Western Blotting

**Image 2.** NEU1 antibody used at 5 ug/ml to detect target protein.



### Immunohistochemistry

**Image 3.** NEU1 antibody was used for immunohistochemistry at a concentration of 4-8 ug/ml to stain Skeletal muscle cells (arrows) in Human Muscle. Magnification is at 400X