

Datasheet for ABIN630441
anti-CYP2D6 antibody (N-Term)



[Go to Product page](#)

2 Images

Overview

Quantity:	100 µg
Target:	CYP2D6
Binding Specificity:	N-Term
Reactivity:	Human, Mouse
Host:	Rabbit
Clonality:	Polyclonal
Conjugate:	This CYP2D6 antibody is un-conjugated
Application:	Western Blotting (WB), Immunohistochemistry (IHC)

Product Details

Immunogen:	CYP2 D6 antibody was raised using the N terminal of CYP2 6 corresponding to a region with amino acids RPPVPITQILGFGPRSQGVFLARYGPAWREQRRFSVSTLRNLGLGKKSLE
Specificity:	CYP2 D6 antibody was raised against the N terminal of CYP2 6
Purification:	Purified

Target Details

Target:	CYP2D6
Alternative Name:	CYP2D6 (CYP2D6 Products)
Background:	CYP2D6 is a member of the cytochrome P450 superfamily of enzymes. The cytochrome P450 proteins are monooxygenases which catalyze many reactions involved in drug metabolism and synthesis of cholesterol, steroids and other lipids. This protein localizes to the endoplasmic

Target Details

reticulum and is known to metabolize as many as 20% of commonly prescribed drugs. Its substrates include debrisoquine, an adrenergic-blocking drug, sparteine and propafenone, both anti-arrhythmic drugs, and amitriptyline, an anti-depressant.

Molecular Weight: 55 kDa (MW of target protein)

Application Details

Application Notes: WB: 2.5 µg/mL, IHC: 4-8 µg/mL
Optimal conditions should be determined by the investigator.

Comment: CYP2D6 Blocking Peptide, catalog no. 33R-8102, is also available for use as a blocking control in assays to test for specificity of this CYP2D6 antibody

Restrictions: For Research Use only

Handling

Format: Lyophilized

Reconstitution: Lyophilized powder. Add distilled water for a 1 mg/mL concentration of CYP2D6 antibody in PBS

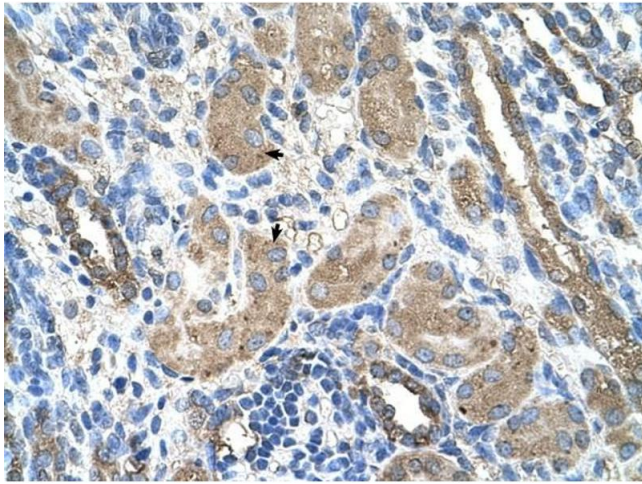
Concentration: Lot specific

Buffer: PBS

Handling Advice: Avoid repeated freeze/thaw cycles.
Dilute only prior to immediate use.

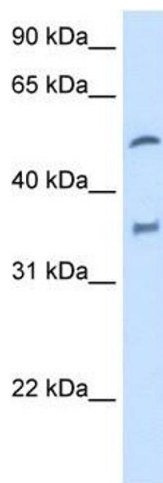
Storage: 4 °C/-20 °C

Storage Comment: Store at 2-8 °C for short periods. For longer periods of storage, store at -20 °C.



Immunohistochemistry

Image 1. CYP2D6 antibody was used for immunohistochemistry at a concentration of 4-8 ug/ml to stain Epithelial cells of renal tubule (arrows) in Human Kidney. Magnification is at 400X



Western Blotting

Image 2. CYP2D6 antibody used at 2.5 ug/ml to detect target protein.