

Datasheet for ABIN630447
anti-NPTN antibody (Middle Region)



[Go to Product page](#)

2 Images

Overview

Quantity:	100 µg
Target:	NPTN
Binding Specificity:	Middle Region
Reactivity:	Human, Mouse, Rat, Dog
Host:	Rabbit
Clonality:	Polyclonal
Conjugate:	This NPTN antibody is un-conjugated
Application:	Western Blotting (WB), Immunohistochemistry (IHC)

Product Details

Immunogen:	Neuroplastin antibody was raised using the middle region of NPTN corresponding to a region with amino acids MEYRINKPRAEDSGEYHCVYHFVSAPKANATIEVKAAPDITGHKRSENKN
Specificity:	Neuroplastin antibody was raised against the middle region of NPTN
Purification:	Purified

Target Details

Target:	NPTN
Alternative Name:	Neuroplastin (NPTN Products)
Background:	Neuroplastin is a type I transmembrane protein belonging to the Ig superfamily. The protein is believed to be involved in cell-cell interactions or cell-substrate interactions. The alpha and beta transcripts show differential localization within the brain.

Target Details

Molecular Weight:	42 kDa (MW of target protein)
Pathways:	Regulation of long-term Neuronal Synaptic Plasticity

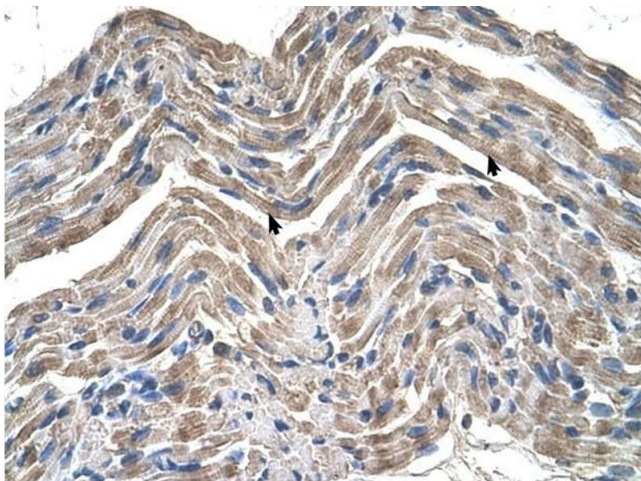
Application Details

Application Notes:	WB: 5 µg/mL, IHC: 4-8 µg/mL Optimal conditions should be determined by the investigator.
Comment:	Neuroplastin Blocking Peptide, catalog no. 33R-5985, is also available for use as a blocking control in assays to test for specificity of this Neuroplastin antibody
Restrictions:	For Research Use only

Handling

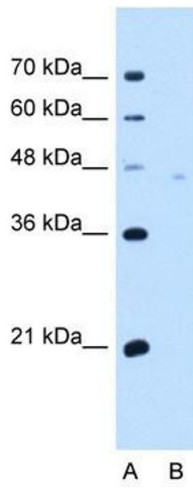
Format:	Lyophilized
Reconstitution:	Lyophilized powder. Add distilled water for a 1 mg/mL concentration of NPTN antibody in PBS
Concentration:	Lot specific
Buffer:	PBS
Handling Advice:	Avoid repeated freeze/thaw cycles. Dilute only prior to immediate use.
Storage:	4 °C/-20 °C
Storage Comment:	Store at 2-8 °C for short periods. For longer periods of storage, store at -20 °C.

Images



Immunohistochemistry

Image 1. Neuroplastin antibody was used for immunohistochemistry at a concentration of 4-8 µg/ml to stain Skeletal muscle cells (arrows) in Human Muscle. Magnification is at 400X



Western Blotting

Image 2. Neuroplastin antibody used at 5 ug/ml to detect target protein.