

Datasheet for ABIN630450  
**anti-LMAN1 antibody (Middle Region)**



[Go to Product page](#)

1 Image

## Overview

Quantity:	100 µg
Target:	LMAN1
Binding Specificity:	Middle Region
Reactivity:	Human, Mouse, Rat, Dog
Host:	Rabbit
Clonality:	Polyclonal
Conjugate:	This LMAN1 antibody is un-conjugated
Application:	Western Blotting (WB)

## Product Details

Immunogen:	LMAN1 antibody was raised using the middle region of LMAN1 corresponding to a region with amino acids DKKKEEFQKGHPDLQGQPAEEIFESVGDRELRQVFEGQNRIHLEIKQLNR
Specificity:	LMAN1 antibody was raised against the middle region of LMAN1
Purification:	Purified

## Target Details

Target:	LMAN1
Alternative Name:	LMAN1 ( <a href="#">LMAN1 Products</a> )
Background:	LMAN1 is a type I integral membrane protein localized in the intermediate region between the endoplasmic reticulum and the Golgi, presumably recycling between the two compartments. The protein is a mannose-specific lectin and is a member of a novel family of plant lectin

## Target Details

---

homologs in the secretory pathway of animal cells. Mutations in its gene are associated with a coagulation defect. Using positional cloning, its gene was identified as the disease gene leading to combined factor V-factor VIII deficiency, a rare, autosomal recessive disorder in which both coagulation factors V and VIII are diminished.

Molecular Weight: 54 kDa (MW of target protein)

## Application Details

---

Application Notes: WB: 1.25 µg/mL  
Optimal conditions should be determined by the investigator.

Comment: LMAN1 Blocking Peptide, catalog no. 33R-2022, is also available for use as a blocking control in assays to test for specificity of this LMAN1 antibody

Restrictions: For Research Use only

## Handling

---

Format: Lyophilized

Reconstitution: Lyophilized powder. Add distilled water for a 1 mg/mL concentration of LMAN1 antibody in PBS

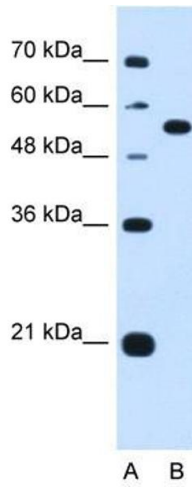
Concentration: Lot specific

Buffer: PBS

Handling Advice: Avoid repeated freeze/thaw cycles.  
Dilute only prior to immediate use.

Storage: 4 °C/-20 °C

Storage Comment: Store at 2-8 °C for short periods. For longer periods of storage, store at -20 °C.



### Western Blotting

**Image 1.** LMAN1 antibody used at 1.25 ug/ml to detect target protein.