

Datasheet for ABIN630451  
**anti-ST3GAL5 antibody (N-Term)**



[Go to Product page](#)

3 Images

### Overview

Quantity:	100 µg
Target:	ST3GAL5
Binding Specificity:	N-Term
Reactivity:	Human, Mouse, Rat
Host:	Rabbit
Clonality:	Polyclonal
Conjugate:	This ST3GAL5 antibody is un-conjugated
Application:	Western Blotting (WB), Immunohistochemistry (IHC)

### Product Details

Immunogen:	ST3 GAL5 antibody was raised using the N terminal of ST3 AL5 corresponding to a region with amino acids DSEAESKYDPPFGFRKFSSKVQTLLELLPEHDLPEHLKAKTCRRCCVIGS
Specificity:	ST3 GAL5 antibody was raised against the N terminal of ST3 AL5
Purification:	Purified

### Target Details

Target:	ST3GAL5
Alternative Name:	ST3GAL5 ( <a href="#">ST3GAL5 Products</a> )
Background:	Ganglioside GM3 is known to participate in the induction of cell differentiation, modulation of cell proliferation, maintenance of fibroblast morphology, signal transduction, and integrin-mediated cell adhesion. ST3GAL5 is a type II membrane protein which catalyzes the formation

## Target Details

---

of GM3 using lactosylceramide as the substrate. It is a member of glycosyltransferase family 29 and may be localized to the Golgi apparatus. Mutation in its gene has been associated with Amish infantile epilepsy syndrome.

Molecular Weight: 48 kDa (MW of target protein)

## Application Details

---

Application Notes: WB: 1.25 µg/mL, IHC: 4-8 µg/mL  
Optimal conditions should be determined by the investigator.

Comment: ST3GAL5 Blocking Peptide, catalog no. 33R-2160, is also available for use as a blocking control in assays to test for specificity of this ST3GAL5 antibody

Restrictions: For Research Use only

## Handling

---

Format: Lyophilized

Reconstitution: Lyophilized powder. Add distilled water for a 1 mg/mL concentration of ST0 AL5 antibody in PBS

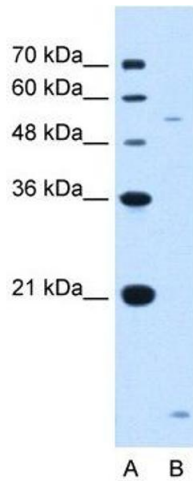
Concentration: Lot specific

Buffer: PBS

Handling Advice: Avoid repeated freeze/thaw cycles.  
Dilute only prior to immediate use.

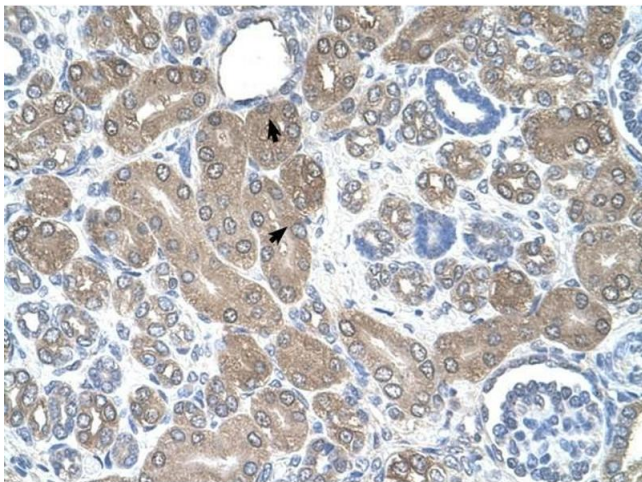
Storage: 4 °C/-20 °C

Storage Comment: Store at 2-8 °C for short periods. For longer periods of storage, store at -20 °C.



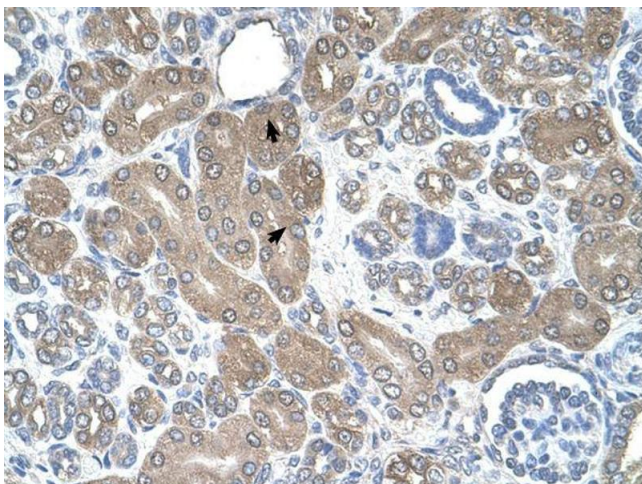
### Western Blotting

**Image 1.** ST3GAL5 antibody used at 1.25 ug/ml to detect target protein.



### Immunohistochemistry

**Image 2.** ST3GAL5 antibody was used for immunohistochemistry at a concentration of 4-8 ug/ml to stain Epithelial cells of renal tubule (arrows) in Human Kidney. Magnification is at 400X



### Immunohistochemistry

**Image 3.** ST3GAL5 antibody was used for immunohistochemistry at a concentration of 4-8 ug/ml. Magnification is at 400X