

## Datasheet for ABIN630452 **anti-PIGV antibody (N-Term)**

### 3 Images



[Go to Product page](#)

### Overview

Quantity:	100 µg
Target:	PIGV
Binding Specificity:	N-Term
Reactivity:	Human, Dog, Mouse, Rat
Host:	Rabbit
Clonality:	Polyclonal
Conjugate:	This PIGV antibody is un-conjugated
Application:	Western Blotting (WB), Immunohistochemistry (IHC)

### Product Details

Immunogen:	PIGV antibody was raised using the N terminal of PIGV corresponding to a region with amino acids FVDQLVEGLLGGLSHWDAEHFLFIAEHGYLYEHNFAFFPGFPLALLVGTE
Specificity:	PIGV antibody was raised against the N terminal of PIGV
Purification:	Purified

### Target Details

Target:	PIGV
Alternative Name:	PIGV ( <a href="#">PIGV Products</a> )
Background:	Glycosylphosphatidylinositol (GPI) is a complex glycolipid that anchors many proteins to the cell surface. The biosynthetic pathway of GPI is mediated by sequential addition of sugars and other components to phosphatidylinositol. PIGV adds the second mannose to the GPI core.

## Target Details

Molecular Weight: 56 kDa (MW of target protein)

Pathways: [Inositol Metabolic Process](#)

## Application Details

Application Notes: WB: 1 µg/mL, IHC: 4-8 µg/mL  
Optimal conditions should be determined by the investigator.

Comment: PIGV Blocking Peptide, catalog no. 33R-3111, is also available for use as a blocking control in assays to test for specificity of this PIGV antibody

Restrictions: For Research Use only

## Handling

Format: Lyophilized

Reconstitution: Lyophilized powder. Add distilled water for a 1 mg/mL concentration of PIGV antibody in PBS

Concentration: Lot specific

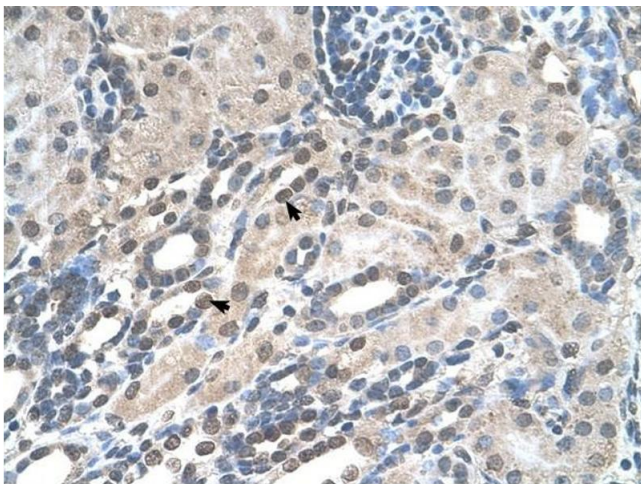
Buffer: PBS

Handling Advice: Avoid repeated freeze/thaw cycles.  
Dilute only prior to immediate use.

Storage: 4 °C/-20 °C

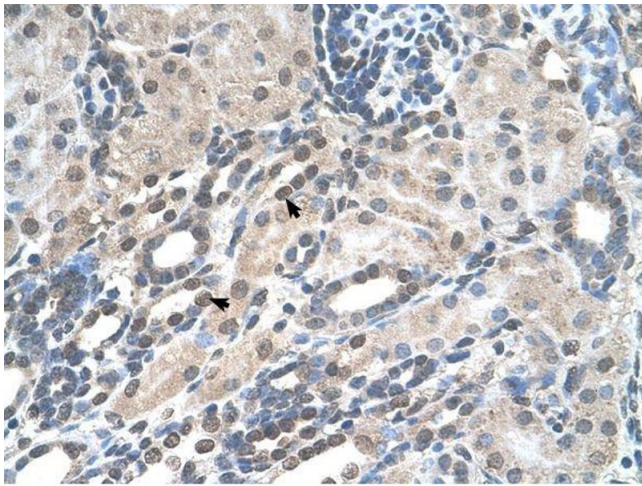
Storage Comment: Store at 2-8 °C for short periods. For longer periods of storage, store at -20 °C.

## Images



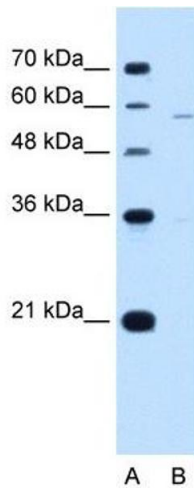
### Immunohistochemistry

**Image 1.** PIGV antibody was used for immunohistochemistry at a concentration of 4-8 µg/ml to stain Epithelial cells of renal tubule (arrows) in Human Kidney. Magnification is at 400X



### Immunohistochemistry

**Image 2.** PIGV antibody was used for immunohistochemistry at a concentration of 4-8 ug/ml. Magnification is at 400X



### Western Blotting

**Image 3.** PIGV antibody used at 1 ug/ml to detect target protein.