

Datasheet for ABIN630454
anti-SULF2 antibody (C-Term)



[Go to Product page](#)

3 Images

Overview

| | |
|----------------------|---|
| Quantity: | 100 µg |
| Target: | SULF2 |
| Binding Specificity: | C-Term |
| Reactivity: | Human |
| Host: | Rabbit |
| Clonality: | Polyclonal |
| Conjugate: | This SULF2 antibody is un-conjugated |
| Application: | Western Blotting (WB), Immunohistochemistry (IHC) |

Product Details

| | |
|---------------|---|
| Immunogen: | SULF2 antibody was raised using the C terminal of SULF2 corresponding to a region with amino acids DVLNQLHVQLMELRSCKGYKQCNPRTRNMDLGLKDGGSYEQYRQFQRRKW |
| Specificity: | SULF2 antibody was raised against the C terminal of SULF2 |
| Purification: | Purified |

Target Details

| | |
|-------------------|---|
| Target: | SULF2 |
| Alternative Name: | SULF2 (SULF2 Products) |
| Background: | Heparan sulfate proteoglycans (HSPGs) act as coreceptors for numerous heparin-binding growth factors and cytokines and are involved in cell signaling. Heparan sulfate 6-O-endosulfatases, such as SULF2, selectively remove 6-O-sulfate groups from heparan sulfate. |

Target Details

This activity modulates the effects of heparan sulfate by altering binding sites for signaling molecules.

Molecular Weight: 98 kDa (MW of target protein)

Application Details

Application Notes: WB: 1.25 µg/mL, IHC: 4-8 µg/mL
Optimal conditions should be determined by the investigator.

Comment: SULF2 Blocking Peptide, catalog no. 33R-2218, is also available for use as a blocking control in assays to test for specificity of this SULF2 antibody

Restrictions: For Research Use only

Handling

Format: Lyophilized

Reconstitution: Lyophilized powder. Add distilled water for a 1 mg/mL concentration of SULF2 antibody in PBS

Concentration: Lot specific

Buffer: PBS

Handling Advice: Avoid repeated freeze/thaw cycles.
Dilute only prior to immediate use.

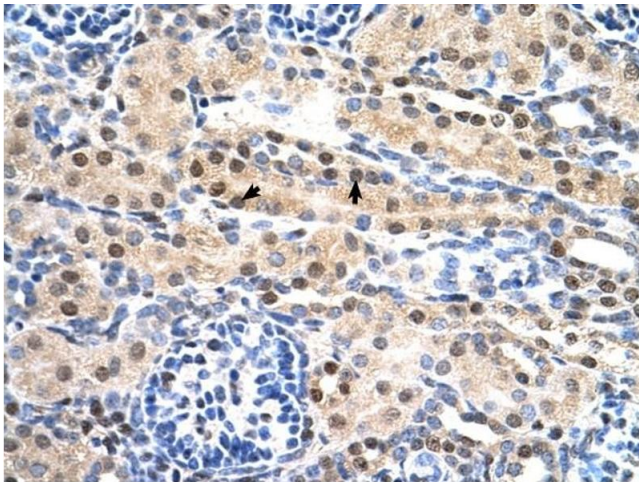
Storage: 4 °C/-20 °C

Storage Comment: Store at 2-8 °C for short periods. For longer periods of storage, store at -20 °C.



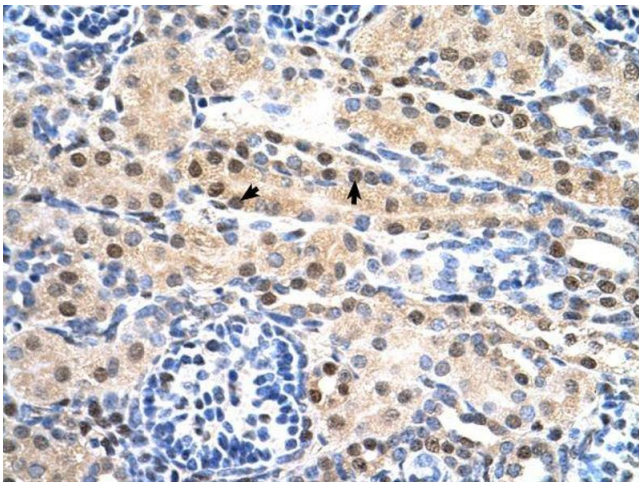
Western Blotting

Image 1. SULF2 antibody used at 1.25 ug/ml to detect target protein.



Immunohistochemistry

Image 2. SULF2 antibody was used for immunohistochemistry at a concentration of 4-8 ug/ml to stain Epithelial cells of renal tubule (arrows) in Human Kidney. Magnification is at 400X



Immunohistochemistry

Image 3. SULF2 antibody was used for immunohistochemistry at a concentration of 4-8 ug/ml. Magnification is at 400X