

Datasheet for ABIN630462

anti-Butyrylcholinesterase antibody (N-Term)[Go to Product page](#)**2** Images

Overview

Quantity:	100 µg
Target:	Butyrylcholinesterase (BCHE)
Binding Specificity:	N-Term
Reactivity:	Human, Mouse, Dog
Host:	Rabbit
Clonality:	Polyclonal
Conjugate:	This Butyrylcholinesterase antibody is un-conjugated
Application:	Western Blotting (WB), Immunohistochemistry (IHC)

Product Details

Immunogen:	BCHE antibody was raised using the N terminal of BCHE corresponding to a region with amino acids SSLHVYDGKFLARVERVIVVSMNYRVGALGFLALPGNPEAPGNMGLFDQQ
Specificity:	BCHE antibody was raised against the N terminal of BCHE
Purification:	Purified

Target Details

Target:	Butyrylcholinesterase (BCHE)
Alternative Name:	BCHE (BCHE Products)
Background:	Mutant alleles at the BCHE locus are responsible for suxamethonium sensitivity. Homozygous persons sustain prolonged apnea after administration of the muscle relaxant suxamethonium in connection with surgical anesthesia. The activity of pseudocholinesterase in the serum is low

Target Details

and its substrate behavior is atypical. In the absence of the relaxant, the homozygote is at no known disadvantage.

Molecular Weight: 68 kDa (MW of target protein)

Pathways: [Peptide Hormone Metabolism](#)

Application Details

Application Notes: WB: 1.25 µg/mL, IHC: 4-8 µg/mL
Optimal conditions should be determined by the investigator.

Comment: BCHE Blocking Peptide, catalog no. 33R-8821, is also available for use as a blocking control in assays to test for specificity of this BCHE antibody

Restrictions: For Research Use only

Handling

Format: Lyophilized

Reconstitution: Lyophilized powder. Add distilled water for a 1 mg/mL concentration of BCHE antibody in PBS

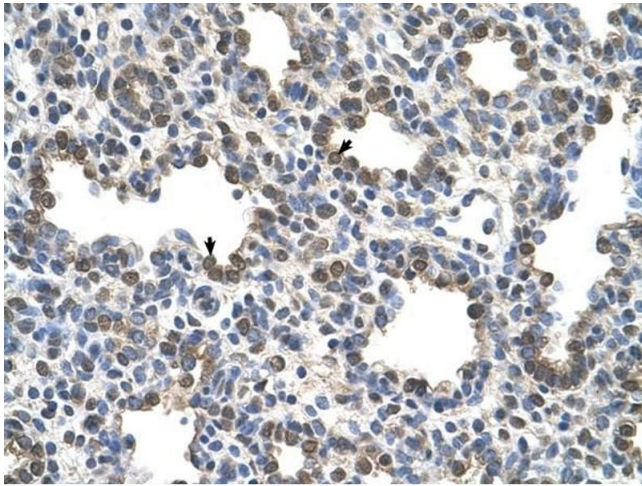
Concentration: Lot specific

Buffer: PBS

Handling Advice: Avoid repeated freeze/thaw cycles.
Dilute only prior to immediate use.

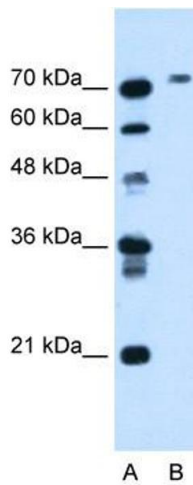
Storage: 4 °C/-20 °C

Storage Comment: Store at 2-8 °C for short periods. For longer periods of storage, store at -20 °C.



Immunohistochemistry

Image 1. BCHE antibody was used for immunohistochemistry at a concentration of 4-8 ug/ml to stain Alveolar cells (arrows) in Human Lung. Magnification is at 400X



Western Blotting

Image 2. BCHE antibody used at 1.25 ug/ml to detect target protein.