

Datasheet for ABIN630464
anti-PLP2 antibody



[Go to Product page](#)

1 Image

Overview

Quantity:	100 µg
Target:	PLP2
Reactivity:	Human, Dog
Host:	Rabbit
Clonality:	Polyclonal
Conjugate:	This PLP2 antibody is un-conjugated
Application:	Western Blotting (WB)

Product Details

Immunogen:	PLP2 antibody was raised using a synthetic peptide corresponding to a region with amino acids LVERGNHISKIVAGVLGLIATCLFGYDAYVTFPVRQPRHTAAPTDPADGPV
Purification:	Purified

Target Details

Target:	PLP2
Alternative Name:	PLP2 (PLP2 Products)
Background:	PLP2 may play a role in cell differentiation in the intestinal epithelium.
Molecular Weight:	17 kDa (MW of target protein)

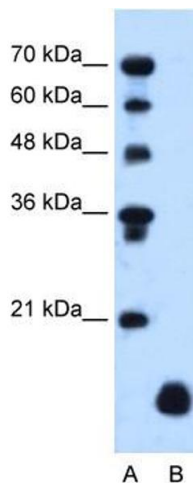
Application Details

Application Notes:	WB: 1.25 µg/mL Optimal conditions should be determined by the investigator.
Comment:	PLP2 Blocking Peptide, catalog no. 33R-5507, is also available for use as a blocking control in assays to test for specificity of this PLP2 antibody
Restrictions:	For Research Use only

Handling

Format:	Lyophilized
Reconstitution:	Lyophilized powder. Add distilled water for a 1 mg/mL concentration of PLP2 antibody in PBS
Concentration:	Lot specific
Buffer:	PBS
Handling Advice:	Avoid repeated freeze/thaw cycles.
Storage:	4 °C/-20 °C
Storage Comment:	Store at 2-8 °C for short periods. For longer periods of storage, store at -20 °C.

Images



Western Blotting

Image 1. PLP2 antibody used at 1.25 ug/ml to detect target protein.