

Datasheet for ABIN630465
anti-CHST1 antibody

3 Images



[Go to Product page](#)

Overview

Quantity:	100 µg
Target:	CHST1
Reactivity:	Human, Mouse, Rat, Dog
Host:	Rabbit
Clonality:	Polyclonal
Conjugate:	This CHST1 antibody is un-conjugated
Application:	Western Blotting (WB), Immunohistochemistry (IHC)

Product Details

Immunogen:	CHST1 antibody was raised using a synthetic peptide corresponding to a region with amino acids SFVQQLFNQHLDFVYLFEPYHVQNTLIPRFTQGKSPADRRVMLGASRD
Purification:	Purified

Target Details

Target:	CHST1
Alternative Name:	CHST1 (CHST1 Products)
Background:	CHST1 catalyzes the transfer of sulfate to position 6 of galactose (Gal) residues of keratan. It has a preference for sulfating keratan sulfate, but it also transfers sulfate to the unsulfated polymer. The sulfotransferase activity on sialyl LacNAc structures is much higher than the corresponding desialylated substrate, and only internal Gal residues are sulfated. It may function in the sulfation of sialyl N-acetyllactosamine oligosaccharide chains attached to

Target Details

glycoproteins. It participates in biosynthesis of selectin ligands. Selectin ligands are present in high endothelial cells (HEVs) and play a central role in lymphocyte homing at sites of inflammation.

Molecular Weight: 47 kDa (MW of target protein)

Pathways: [Glycosaminoglycan Metabolic Process](#)

Application Details

Application Notes: WB: 1.25 µg/mL, IHC: 4-8 µg/mL
Optimal conditions should be determined by the investigator.

Comment: CHST1 Blocking Peptide, catalog no. 33R-8443, is also available for use as a blocking control in assays to test for specificity of this CHST1 antibody

Restrictions: For Research Use only

Handling

Format: Lyophilized

Reconstitution: Lyophilized powder. Add distilled water for a 1 mg/mL concentration of CHST1 antibody in PBS

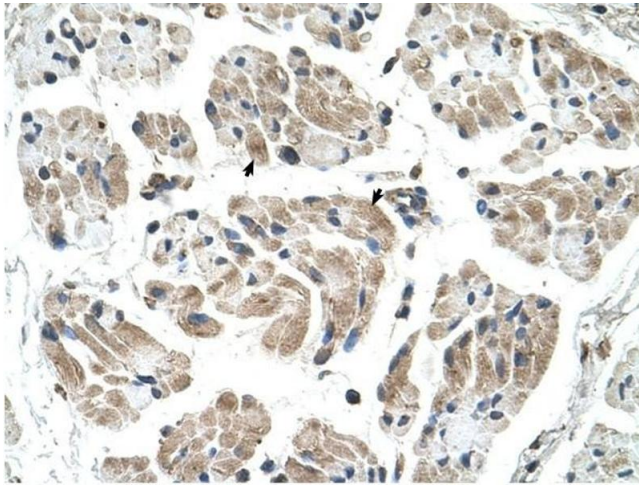
Concentration: Lot specific

Buffer: PBS

Handling Advice: Avoid repeated freeze/thaw cycles.

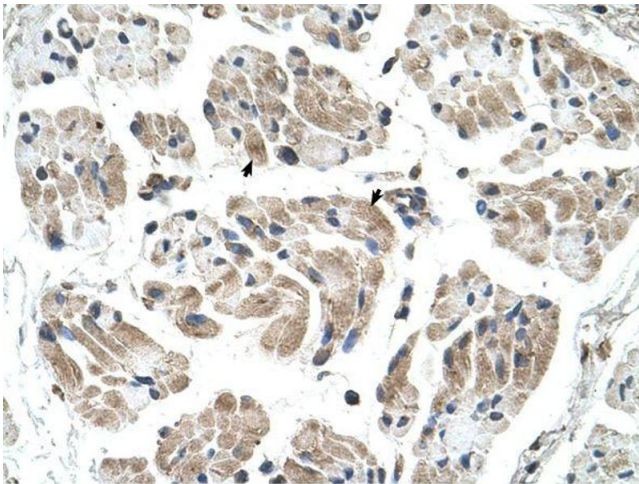
Storage: 4 °C/-20 °C

Storage Comment: Store at 2-8 °C for short periods. For longer periods of storage, store at -20 °C.



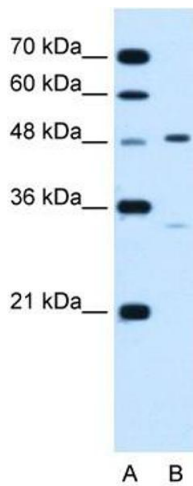
Immunohistochemistry

Image 1. CHST1 antibody was used for immunohistochemistry at a concentration of 4-8 ug/ml to stain Skeletal muscle cells (arrows) in Human Muscle. Magnification is at 400X



Immunohistochemistry

Image 2. CHST1 antibody was used for immunohistochemistry at a concentration of 4-8 ug/ml. Magnification is at 400X



Western Blotting

Image 3. CHST1 antibody used at 1.25 ug/ml to detect target protein.