

Datasheet for ABIN630466
anti-TMPRSS11D antibody (N-Term)



[Go to Product page](#)

3 Images

Overview

Quantity:	100 µg
Target:	TMPRSS11D
Binding Specificity:	N-Term
Reactivity:	Human
Host:	Rabbit
Clonality:	Polyclonal
Conjugate:	This TMPRSS11D antibody is un-conjugated
Application:	Western Blotting (WB), Immunohistochemistry (IHC)

Product Details

Immunogen:	TMPRSS11 D antibody was raised using the N terminal of TMPRSS11 corresponding to a region with amino acids RSSFQLLNVEYNSQLNSPATQEYRTLSGRIESLITKTFKESNLRNQFIRA
Specificity:	TMPRSS11 D antibody was raised against the N terminal of TMPRSS11
Purification:	Purified

Target Details

Target:	TMPRSS11D
Alternative Name:	TMPRSS11D (TMPRSS11D Products)
Background:	TMPRSS11D is a trypsin-like serine protease released from the submucosal serous glands onto mucous membrane. It is a type II integral membrane protein and has 29-38% identity in the sequence of the catalytic region with human hepsin, enteropeptidase, acrosin, and mast cell

Target Details

trypsin. The noncatalytic region has little similarity to other known proteins. This protein may play some biological role in the host defense system on the mucous membrane independently of or in cooperation with other substances in airway mucous or bronchial secretions.

Molecular Weight: 46 kDa (MW of target protein)

Pathways: [Positive Regulation of Peptide Hormone Secretion](#), [Regulation of Carbohydrate Metabolic Process](#)

Application Details

Application Notes: WB: 2.5 µg/mL, IHC: 4-8 µg/mL
Optimal conditions should be determined by the investigator.

Comment: Tmprss11d Blocking Peptide, catalog no. 33R-8213, is also available for use as a blocking control in assays to test for specificity of this Tmprss11d antibody

Restrictions: For Research Use only

Handling

Format: Lyophilized

Reconstitution: Lyophilized powder. Add distilled water for a 1 mg/mL concentration of Tmprss10 antibody in PBS

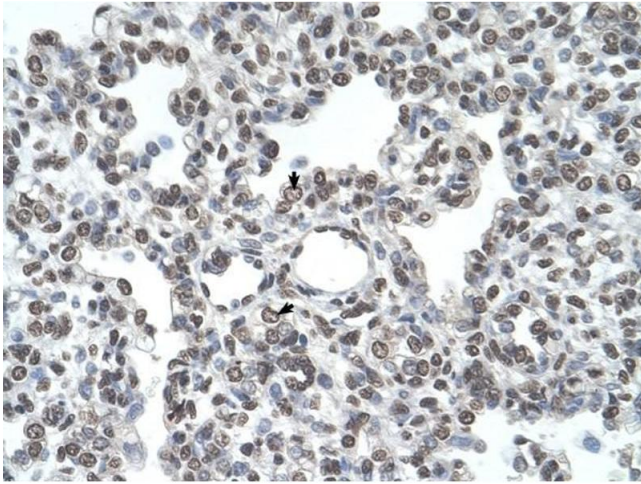
Concentration: Lot specific

Buffer: PBS

Handling Advice: Avoid repeated freeze/thaw cycles.
Dilute only prior to immediate use.

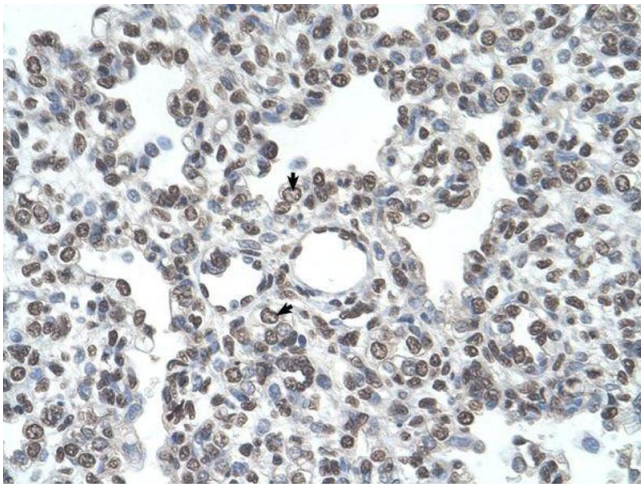
Storage: 4 °C/-20 °C

Storage Comment: Store at 2-8 °C for short periods. For longer periods of storage, store at -20 °C.



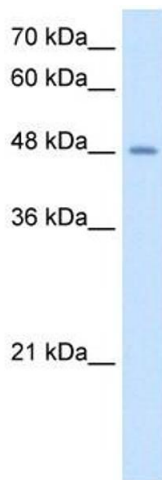
Immunohistochemistry

Image 1. Tmprss11d antibody was used for immunohistochemistry at a concentration of 4-8 ug/ml to stain Alveolar cells (arrows) in Human Lung. Magnification is at 400X



Immunohistochemistry

Image 2. Tmprss11d antibody was used for immunohistochemistry at a concentration of 4-8 ug/ml. Magnification is at 400X



Western Blotting

Image 3. Tmprss11d antibody used at 2.5 ug/ml to detect target protein.