

Datasheet for ABIN630471
anti-TMEM59L antibody (N-Term)



[Go to Product page](#)

1 Image

Overview

Quantity:	100 µg
Target:	TMEM59L
Binding Specificity:	N-Term
Reactivity:	Human
Host:	Rabbit
Clonality:	Polyclonal
Conjugate:	This TMEM59L antibody is un-conjugated
Application:	Western Blotting (WB)

Product Details

Immunogen:	TMEM59 L antibody was raised using the N terminal of TMEM59 corresponding to a region with amino acids PAASAPSARDPFAPQLGDTQNCQLRCRDRDLGPQPSQAGLEGASESPYDR
Specificity:	TMEM59 L antibody was raised against the N terminal of TMEM59
Purification:	Purified

Target Details

Target:	TMEM59L
Alternative Name:	TMEM59L (TMEM59L Products)
Background:	TMEM59L is a predicted type-I membrane glycoprotein. It may play a role in functioning of the central nervous system.

Target Details

Molecular Weight: 35 kDa (MW of target protein)

Application Details

Application Notes: WB: 1.25 µg/mL
Optimal conditions should be determined by the investigator.

Comment: TMEM59L Blocking Peptide, catalog no. 33R-6954, is also available for use as a blocking control in assays to test for specificity of this TMEM59L antibody

Restrictions: For Research Use only

Handling

Format: Lyophilized

Reconstitution: Lyophilized powder. Add distilled water for a 1 mg/mL concentration of TMEM50 antibody in PBS

Concentration: Lot specific

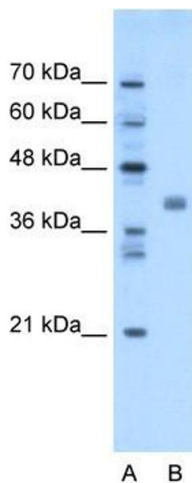
Buffer: PBS

Handling Advice: Avoid repeated freeze/thaw cycles.
Dilute only prior to immediate use.

Storage: 4 °C/-20 °C

Storage Comment: Store at 2-8 °C for short periods. For longer periods of storage, store at -20 °C.

Images



Western Blotting

Image 1. TMEM59L antibody used at 1.25 ug/ml to detect target protein.