

Datasheet for ABIN630485
anti-SLC22A7 antibody



[Go to Product page](#)

2 Images

Overview

Quantity:	100 µg
Target:	SLC22A7
Reactivity:	Human
Host:	Rabbit
Clonality:	Polyclonal
Conjugate:	This SLC22A7 antibody is un-conjugated
Application:	Western Blotting (WB), Immunohistochemistry (IHC)

Product Details

Immunogen:	SLC22 A7 antibody was raised using a synthetic peptide corresponding to a region with amino acids LPGAPANFSHQDVWLEAHLPREPDGTLSSCLRFAYPQALPNTTLGEERQS
Purification:	Purified

Target Details

Target:	SLC22A7
Alternative Name:	SLC22A7 (SLC22A7 Products)
Background:	SLC22A7 is involved in the sodium-independent transport and excretion of organic anions, some of which are potentially toxic. The protein is an integral membrane protein and appears to be localized to the basolateral membrane of the kidney.
Molecular Weight:	60 kDa (MW of target protein)

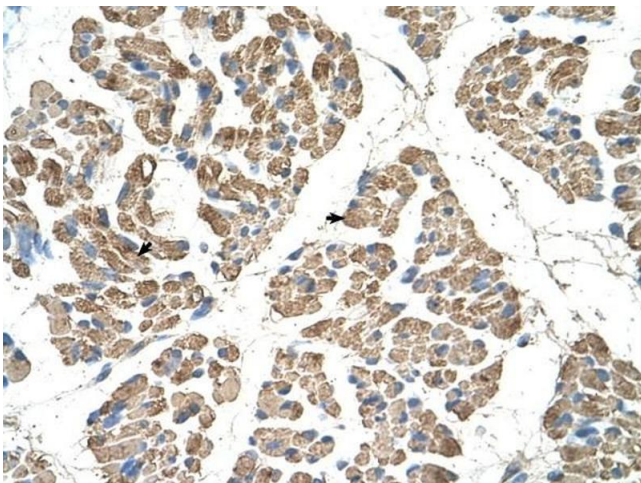
Application Details

Application Notes:	WB: 5 µg/mL, IHC: 4-8 µg/mL Optimal conditions should be determined by the investigator.
Comment:	SLC22A7 Blocking Peptide, catalog no. 33R-5265, is also available for use as a blocking control in assays to test for specificity of this SLC22A7 antibody
Restrictions:	For Research Use only

Handling

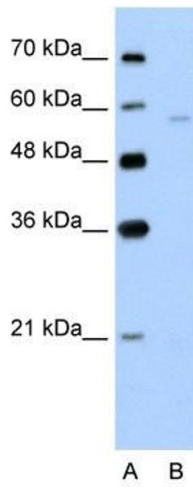
Format:	Lyophilized
Reconstitution:	Lyophilized powder. Add distilled water for a 1 mg/mL concentration of SLC20 7 antibody in PBS
Concentration:	Lot specific
Buffer:	PBS
Handling Advice:	Avoid repeated freeze/thaw cycles.
Storage:	4 °C/-20 °C
Storage Comment:	Store at 2-8 °C for short periods. For longer periods of storage, store at -20 °C.

Images



Immunohistochemistry

Image 1. SLC22A7 antibody was used for immunohistochemistry at a concentration of 4-8 µg/ml to stain Skeletal muscle cells (arrows) in Human Muscle. Magnification is at 400X



Western Blotting

Image 2. SLC22A7 antibody used at 5 ug/ml to detect target protein.