

Datasheet for ABIN630497

anti-ESRRA antibody (N-Term)[Go to Product page](#)**1** Image

Overview

Quantity:	100 µL
Target:	ESRRA
Binding Specificity:	N-Term
Reactivity:	Human, Mouse, Rat
Host:	Rabbit
Clonality:	Polyclonal
Conjugate:	This ESRRA antibody is un-conjugated
Application:	Western Blotting (WB)

Product Details

Immunogen:	ESRRA antibody was raised using the N terminal of ESRRA corresponding to a region with amino acids KEGVRLDRVRGGRQYKRRPEVDPLPFGPFPAGPLAVAGGPRKTAAPVN
Specificity:	ESRRA antibody was raised against the N terminal of ESRRA
Purification:	Affinity purified

Target Details

Target:	ESRRA
Alternative Name:	ESRRA (ESRRA Products)
Background:	ESRRA is a nuclear receptor that is closely related to the estrogen receptor. This protein acts as a site-specific transcription regulator and has been also shown to interact with estrogen and the transcription factor TFIIIB by direct protein-protein contact. The binding and regulatory

Target Details

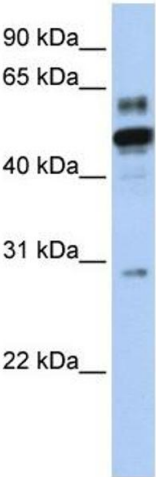
	activities of this protein have been demonstrated in the regulation of a variety of genes including lactoferrin, osteopontin, medium-chain acyl coenzyme A dehydrogenase (MCAD) and thyroid hormone receptor genes.
Molecular Weight:	46 kDa (MW of target protein)
Pathways:	Nuclear Receptor Transcription Pathway , Steroid Hormone Mediated Signaling Pathway , Regulation of Lipid Metabolism by PPARalpha

Application Details

Application Notes:	WB: 1 µg/mL Optimal conditions should be determined by the investigator.
Comment:	ESRRA Blocking Peptide, catalog no. 33R-4336, is also available for use as a blocking control in assays to test for specificity of this ESRRA antibody
Restrictions:	For Research Use only

Handling

Format:	Lyophilized
Reconstitution:	Lyophilized powder. Add distilled water for a 1 mg/mL concentration of ESRRA antibody in PBS
Concentration:	Lot specific
Buffer:	PBS
Handling Advice:	Avoid repeated freeze/thaw cycles. Dilute only prior to immediate use.
Storage:	4 °C/-20 °C
Storage Comment:	Store at 2-8 °C for short periods. For longer periods of storage, store at -20 °C.



Western Blotting

Image 1. ESRRA antibody used at 1 ug/ml to detect target protein.