

## Datasheet for ABIN630516 **anti-HBS1L antibody**



[Go to Product page](#)

### 1 Image

#### Overview

Quantity:	100 µL
Target:	HBS1L
Reactivity:	Hepatitis B Virus (HBV)
Host:	Rabbit
Clonality:	Polyclonal
Conjugate:	This HBS1L antibody is un-conjugated
Application:	Western Blotting (WB)

#### Product Details

Immunogen:	HBS1 L antibody was raised using a synthetic peptide corresponding to a region with amino acids MNHKILVCFADQSGFCITGKIEAGYIQTDROLLAMPPNETCTVKGITLH
Purification:	Affinity purified

#### Target Details

Target:	HBS1L
Abstract:	<a href="#">HBS1L Products</a>
Target Type:	Viral Protein
Background:	HBS1L belongs to the GTP-binding elongation factor family. The HBS1L-MYB intergenic region on chromosome 6q23.3 influences erythrocyte, platelet, and monocyte counts. HBS1L-related genetic variants play a key role in control of fetal hemoglobin levels.
Molecular Weight:	22 kDa (MW of target protein)

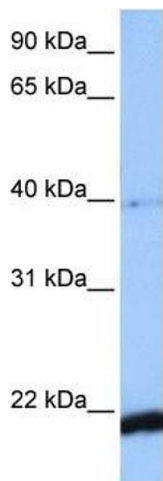
## Application Details

Application Notes:	WB: 1 µg/mL Optimal conditions should be determined by the investigator.
Comment:	HBS1L Blocking Peptide, catalog no. 33R-6246, is also available for use as a blocking control in assays to test for specificity of this HBS1L antibody
Restrictions:	For Research Use only

## Handling

Format:	Lyophilized
Reconstitution:	Lyophilized powder. Add distilled water for a 1 mg/mL concentration of HBS0 antibody in PBS
Concentration:	Lot specific
Buffer:	PBS
Handling Advice:	Avoid repeated freeze/thaw cycles.
Storage:	4 °C/-20 °C
Storage Comment:	Store at 2-8 °C for short periods. For longer periods of storage, store at -20 °C.

## Images



### Western Blotting

**Image 1.** HBS1L antibody used at 1 µg/ml to detect target protein.