

Datasheet for ABIN630519 **anti-DLC1 antibody (C-Term)**



[Go to Product page](#)

1 Image

Overview

Quantity:	100 µL
Target:	DLC1
Binding Specificity:	C-Term
Reactivity:	Human, Mouse, Rat
Host:	Rabbit
Clonality:	Polyclonal
Conjugate:	This DLC1 antibody is un-conjugated
Application:	Western Blotting (WB)

Product Details

Immunogen:	DLC1 antibody was raised using the C terminal of DLC1 corresponding to a region with amino acids NLAVCLAPSLFHLNLTALKRENSSPRVMQRKQSLGKPDQKDLNENLAATQGL
Specificity:	DLC1 antibody was raised against the C terminal of DLC1
Purification:	Affinity purified

Target Details

Target:	DLC1
Alternative Name:	DLC1 (DLC1 Products)
Background:	This gene is deleted in the primary tumor of hepatocellular carcinoma. It maps to 8p22-p21.3, a region frequently deleted in solid tumors. It is suggested that this gene is a candidate tumor suppressor gene for human liver cancer, as well as for prostate, lung, colorectal, and breast

Target Details

cancers. DLC1 functions as a GTPase-activating protein specific for Rho and an activator of PLCD1 in vivo and induces morphological changes and detachment through cytoskeletal reorganization.

Molecular Weight: 52 kDa (MW of target protein)

Pathways: [Tube Formation, Positive Regulation of Endopeptidase Activity](#)

Application Details

Application Notes: WB: 0.5 µg/mL
Optimal conditions should be determined by the investigator.

Comment: DLC1 Blocking Peptide, catalog no. 33R-6752, is also available for use as a blocking control in assays to test for specificity of this DLC1 antibody

Restrictions: For Research Use only

Handling

Format: Lyophilized

Reconstitution: Lyophilized powder. Add distilled water for a 1 mg/mL concentration of DLC1 antibody in PBS

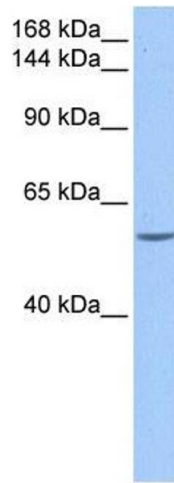
Concentration: Lot specific

Buffer: PBS

Handling Advice: Avoid repeated freeze/thaw cycles.
Dilute only prior to immediate use.

Storage: 4 °C/-20 °C

Storage Comment: Store at 2-8 °C for short periods. For longer periods of storage, store at -20 °C.



Western Blotting

Image 1. DLC1 antibody used at 0.5 ug/ml to detect target protein.