

Datasheet for ABIN630527  
**anti-CCDC46 antibody (C-Term)**



[Go to Product page](#)

1 Image

## Overview

Quantity:	100 µL
Target:	CCDC46
Binding Specificity:	C-Term
Reactivity:	Human
Host:	Rabbit
Clonality:	Polyclonal
Conjugate:	This CCDC46 antibody is un-conjugated
Application:	Western Blotting (WB)

## Product Details

Immunogen:	CCDC46 antibody was raised using the C terminal of CCDC46 corresponding to a region with amino acids IEKEYTQKLAKSSQIIAELQTTISSLKEENSQQQLAAERRLQDVRQKFED
Specificity:	CCDC46 antibody was raised against the C terminal of CCDC46
Purification:	Affinity purified

## Target Details

Target:	CCDC46
Alternative Name:	CCDC46 ( <a href="#">CCDC46 Products</a> )
Background:	CCDC46 is a protein with filament, myosin tail and ATPase domains. Orthologs of the gene exist in mouse, rat and chimp.

## Target Details

---

Molecular Weight: 23 kDa (MW of target protein)

Pathways: [SARS-CoV-2 Protein Interactome](#)

## Application Details

---

Application Notes: WB: 1 µg/mL  
Optimal conditions should be determined by the investigator.

Comment: CCDC46 Blocking Peptide, catalog no. 33R-3942, is also available for use as a blocking control in assays to test for specificity of this CCDC46 antibody

Restrictions: For Research Use only

## Handling

---

Format: Lyophilized

Reconstitution: Lyophilized powder. Add distilled water for a 1 mg/mL concentration of CCDC46 antibody in PBS

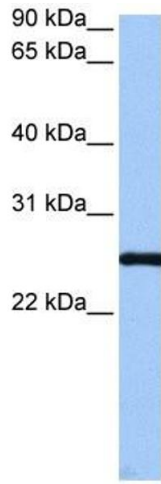
Concentration: Lot specific

Buffer: PBS

Handling Advice: Avoid repeated freeze/thaw cycles.  
Dilute only prior to immediate use.

Storage: 4 °C/-20 °C

Storage Comment: Store at 2-8 °C for short periods. For longer periods of storage, store at -20 °C.



### Western Blotting

**Image 1.** CCDC46 antibody used at 1 ug/ml to detect target protein.