

Datasheet for ABIN630531
anti-CC2D1B antibody (C-Term)



[Go to Product page](#)

1 Image

Overview

Quantity:	100 µL
Target:	CC2D1B
Binding Specificity:	C-Term
Reactivity:	Human, Mouse, Rat
Host:	Rabbit
Clonality:	Polyclonal
Conjugate:	This CC2D1B antibody is un-conjugated
Application:	Western Blotting (WB)

Product Details

Immunogen:	CC2 D2 antibody was raised using the C terminal of CC2 2 corresponding to a region with amino acids IVRGMNLPAPPGVTPDDLDAFVRFEFHYPNSDQAQKSKTAVVKNTNSPEF
Specificity:	CC2 D2 antibody was raised against the C terminal of CC2 2
Purification:	Affinity purified

Target Details

Target:	CC2D1B
Alternative Name:	CC2D1B (CC2D1B Products)
Background:	CC2D1B belongs to the CC2D1 family. It contains 1 C2 domain. A function of Cc2d1b/Cc2d1a and their Drosophila homologue l(2)gd in D.melanogaster in Notch trafficking have been reported.

Target Details

Molecular Weight: 41 kDa (MW of target protein)

Application Details

Application Notes: WB: 1 µg/mL
Optimal conditions should be determined by the investigator.

Comment: CC2D1B Blocking Peptide, catalog no. 33R-4207, is also available for use as a blocking control in assays to test for specificity of this CC2D1B antibody

Restrictions: For Research Use only

Handling

Format: Lyophilized

Reconstitution: Lyophilized powder. Add distilled water for a 1 mg/mL concentration of CC0 0 antibody in PBS

Concentration: Lot specific

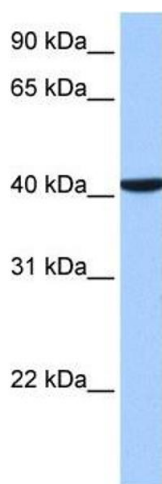
Buffer: PBS

Handling Advice: Avoid repeated freeze/thaw cycles.
Dilute only prior to immediate use.

Storage: 4 °C/-20 °C

Storage Comment: Store at 2-8 °C for short periods. For longer periods of storage, store at -20 °C.

Images



Western Blotting

Image 1. CC2D1B antibody used at 1 ug/ml to detect target protein.