

Datasheet for ABIN630537
anti-LOC441956 antibody (N-Term)



[Go to Product page](#)

1 Image

Overview

Quantity:	100 µL
Target:	LOC441956
Binding Specificity:	N-Term
Reactivity:	Human
Host:	Rabbit
Clonality:	Polyclonal
Conjugate:	This LOC441956 antibody is un-conjugated
Application:	Western Blotting (WB)

Product Details

Immunogen:	LOC441956 antibody was raised using the N terminal of LOC441956 corresponding to a region with amino acids APEDPASLRHGLWHQRTQPLAPWTMAAEDPAPRILDYGSRGSPASPWTK
Specificity:	LOC441956 antibody was raised against the N terminal of LOC441956
Purification:	Affinity purified

Target Details

Target:	LOC441956
Alternative Name:	LOC441956 (LOC441956 Products)
Background:	The function of LOC441956 protein has not been widely studied, and is yet to be fully elucidated.

Target Details

Molecular Weight: 15 kDa (MW of target protein)

Application Details

Application Notes: WB: 1 µg/mL
Optimal conditions should be determined by the investigator.

Comment: LOC441956 Blocking Peptide, catalog no. 33R-1418, is also available for use as a blocking control in assays to test for specificity of this LOC441956 antibody

Restrictions: For Research Use only

Handling

Format: Lyophilized

Reconstitution: Lyophilized powder. Add distilled water for a 1 mg/mL concentration of LOC441956 antibody in PBS

Concentration: Lot specific

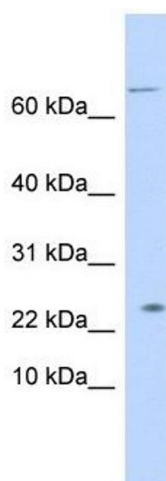
Buffer: PBS

Handling Advice: Avoid repeated freeze/thaw cycles.
Dilute only prior to immediate use.

Storage: 4 °C/-20 °C

Storage Comment: Store at 2-8 °C for short periods. For longer periods of storage, store at -20 °C.

Images



Western Blotting

Image 1. LOC441956 antibody used at 1 ug/ml to detect target protein.