

Datasheet for ABIN630539  
**anti-PRDM15 antibody (Middle Region)**



[Go to Product page](#)

1 Image

## Overview

Quantity:	100 µL
Target:	PRDM15
Binding Specificity:	Middle Region
Reactivity:	Human, Mouse, Rat
Host:	Rabbit
Clonality:	Polyclonal
Conjugate:	This PRDM15 antibody is un-conjugated
Application:	Western Blotting (WB)

## Product Details

Immunogen:	PRDM15 antibody was raised using the middle region of PRDM15 corresponding to a region with amino acids LCGTKVSTRASMSRHMRRKHPEVLAVRIDDLDHLPETTTIDASSIGIVQP
Specificity:	PRDM15 antibody was raised against the middle region of PRDM15
Purification:	Affinity purified

## Target Details

Target:	PRDM15
Alternative Name:	PRDM15 ( <a href="#">PRDM15 Products</a> )
Background:	PRDM15 may be involved in transcriptional regulation.
Molecular Weight:	134 kDa (MW of target protein)

## Application Details

---

Application Notes:	WB: 1 µg/mL Optimal conditions should be determined by the investigator.
Comment:	PRDM15 Blocking Peptide, catalog no. 33R-4819, is also available for use as a blocking control in assays to test for specificity of this PRDM15 antibody
Restrictions:	For Research Use only

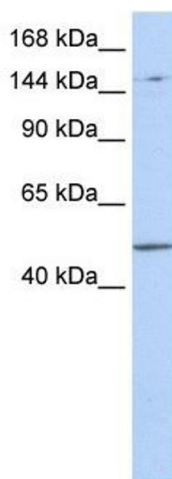
## Handling

---

Format:	Lyophilized
Reconstitution:	Lyophilized powder. Add distilled water for a 1 mg/mL concentration of PRDM15 antibody in PBS
Concentration:	Lot specific
Buffer:	PBS
Handling Advice:	Avoid repeated freeze/thaw cycles. Dilute only prior to immediate use.
Storage:	4 °C/-20 °C
Storage Comment:	Store at 2-8 °C for short periods. For longer periods of storage, store at -20 °C.

## Images

---



### Western Blotting

**Image 1.** PRDM15 antibody used at 1 ug/ml to detect target protein.