

Datasheet for ABIN630542
anti-RRP1B antibody



[Go to Product page](#)

1 Image

Overview

Quantity:	100 µL
Target:	RRP1B
Reactivity:	Human
Host:	Rabbit
Clonality:	Polyclonal
Conjugate:	This RRP1B antibody is un-conjugated
Application:	Western Blotting (WB)

Product Details

Immunogen:	RRP1 B antibody was raised using a synthetic peptide corresponding to a region with amino acids VTFGLNRNMTAEFKKTDKSILVSPTGPSRVAFDPEQKPLHGVLKPTPTSSP
Purification:	Affinity purified

Target Details

Target:	RRP1B
Alternative Name:	RRP1B (RRP1B Products)
Background:	RRP1B belongs to the RRP1 family. It may be a novel susceptibility gene for breast cancer progression and metastasis.
Molecular Weight:	84 kDa (MW of target protein)

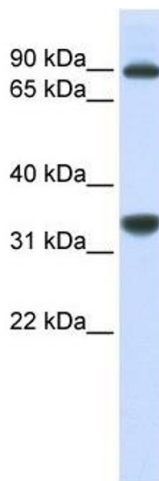
Application Details

Application Notes:	WB: 1 µg/mL Optimal conditions should be determined by the investigator.
Comment:	RRP1B Blocking Peptide, catalog no. 33R-9842, is also available for use as a blocking control in assays to test for specificity of this RRP1B antibody
Restrictions:	For Research Use only

Handling

Format:	Lyophilized
Reconstitution:	Lyophilized powder. Add distilled water for a 1 mg/mL concentration of RRP0 antibody in PBS
Concentration:	Lot specific
Buffer:	PBS
Handling Advice:	Avoid repeated freeze/thaw cycles.
Storage:	4 °C/-20 °C
Storage Comment:	Store at 2-8 °C for short periods. For longer periods of storage, store at -20 °C.

Images



Western Blotting

Image 1. RRP1B antibody used at 1 µg/ml to detect target protein.