

Datasheet for ABIN630548
anti-KRTAP24-1 antibody (Middle Region)



[Go to Product page](#)

1 Image

Overview

Quantity:	100 µL
Target:	KRTAP24-1
Binding Specificity:	Middle Region
Reactivity:	Human
Host:	Rabbit
Clonality:	Polyclonal
Conjugate:	This KRTAP24-1 antibody is un-conjugated
Application:	Western Blotting (WB)

Product Details

Immunogen:	KAP24.1 antibody was raised using the middle region of KRTAP24-1 corresponding to a region with amino acids LVRNYHYSSYRPTSCRPLSYLSRSFRSLSYIPSTFPPLRYLCSGSRPLKC
Specificity:	KAP24.1 antibody was raised against the middle region of KRTAP24-1
Purification:	Affinity purified

Target Details

Target:	KRTAP24-1
Alternative Name:	KAP24.1 (KRTAP24-1 Products)
Background:	In the hair cortex, hair keratin intermediate filaments are embedded in an interfilamentous matrix, consisting of hair keratin-associated proteins (KRTAP), which are essential for the formation of a rigid and resistant hair shaft through their extensive disulfide bond cross-linking

Target Details

with abundant cysteine residues of hair keratins. The matrix proteins include the high-sulfur and high-glycine-tyrosine keratins.

Molecular Weight: 28 kDa (MW of target protein)

Application Details

Application Notes: WB: 1 µg/mL
Optimal conditions should be determined by the investigator.

Comment: KAP24.1 Blocking Peptide, catalog no. 33R-5538, is also available for use as a blocking control in assays to test for specificity of this KAP24.1 antibody

Restrictions: For Research Use only

Handling

Format: Lyophilized

Reconstitution: Lyophilized powder. Add distilled water for a 1 mg/mL concentration of KRTAP24-1 antibody in PBS

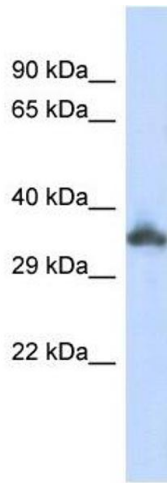
Concentration: Lot specific

Buffer: PBS

Handling Advice: Avoid repeated freeze/thaw cycles.
Dilute only prior to immediate use.

Storage: 4 °C/-20 °C

Storage Comment: Store at 2-8 °C for short periods. For longer periods of storage, store at -20 °C.



Western Blotting

Image 1. KAP24.1 antibody used at 1 ug/ml to detect target protein.