

Datasheet for ABIN630557
anti-CKM antibody (N-Term)



[Go to Product page](#)

1 Image

1 Publication

Overview

Quantity:	100 µL
Target:	CKM
Binding Specificity:	N-Term
Reactivity:	Human, Mouse, Rat, Dog
Host:	Rabbit
Clonality:	Polyclonal
Conjugate:	This CKM antibody is un-conjugated
Application:	Western Blotting (WB)

Product Details

Immunogen:	CKMM antibody was raised using the N terminal of CKM corresponding to a region with amino acids VGCVAGDEESYEVFKELFDPIISDRHGGYKPTDKHKTDLNHENLKGGDDL
Specificity:	CKMM antibody was raised against the N terminal of CKM
Purification:	Affinity purified

Target Details

Target:	CKM
Alternative Name:	CKMM (CKM Products)
Background:	CKM is a cytoplasmic enzyme involved in energy homeostasis and is an important serum marker for myocardial infarction. The encoded protein reversibly catalyzes the transfer of phosphate between ATP and various phosphogens such as creatine phosphate. It acts as a

Target Details

homodimer in striated muscle as well as in other tissues, and as a heterodimer with a similar brain isozyme in heart.

Molecular Weight: 43 kDa (MW of target protein)

Application Details

Application Notes: WB: 1 µg/mL
Optimal conditions should be determined by the investigator.

Comment: CKMM Blocking Peptide, catalog no. 33R-9549, is also available for use as a blocking control in assays to test for specificity of this CKMM antibody

Restrictions: For Research Use only

Handling

Format: Lyophilized

Reconstitution: Lyophilized powder. Add distilled water for a 1 mg/mL concentration of CKM antibody in PBS

Concentration: Lot specific

Buffer: PBS

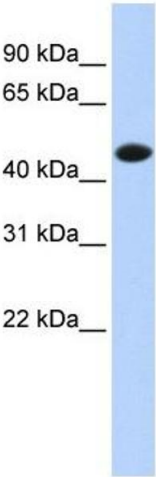
Handling Advice: Avoid repeated freeze/thaw cycles.
Dilute only prior to immediate use.

Storage: 4 °C/-20 °C

Storage Comment: Store at 2-8 °C for short periods. For longer periods of storage, store at -20 °C.

Publications

Product cited in: Mihm, Yu, Reiser, Bauer: "Effects of peroxynitrite on isolated cardiac trabeculae: selective impact on myofibrillar energetic controllers." in: **Biochimie**, Vol. 85, Issue 6, pp. 587-96, (2003) ([PubMed](#)).



Western Blotting

Image 1. CKMM antibody used at 1 ug/ml to detect target protein.